

Case Study

Momentum Trains, operator of Transport for NSW's new regional rail fleet, has completed a vast new state-of-the-art maintenance facility covering 25 hectares in Dubbo. Tigerlight worked closely to ensure that their strict environmental and safety commitments remained on track.

Summary

Momentum Trains required a robust future-proof lighting system at their new Mindyarra train maintenance centre. The facility operates 24/7 and is powered by solar panels and batteries.

The installation was site-wide, comprising over 840 luminaires, all based on the MegaFlood modular lighting platform.

Strict parameters were set for the project including:

- 80 lux target for external maintenance areas
- DALI control for advanced lighting management
- Remote drivers for future maintenance
- Custom powder coating
- 3000K CCT and 80 CRI for clarity and colour rendering indoor maintenance areas.
- Compliance with obtrusive light standards due to the proximity to residential areas
- Zero upward light spill for dark-sky preservation as the site is 200km from the Coonabarabran Observatory.



**MEGA
FLOOD**



Solution

A feature of the installation is the flexibility and versatility of the MegaFlood modular platform to extend across the entire 25 hectare site.

The lighting plan nominated a range of wattages from 20W, 40W, 80W, 120W, 160W to 200W, to deliver light uniformity at a variety of mounting heights, throughout the internal maintenance sheds, external platforms and tracks, roadways, carparks and perimeters.

The plan also specified T4M and T4S optical lenses. Trunion and zero-tilt spigot brackets were selected. CRI was set at 80 for all maintenance areas.

A number of Sentry wall-pack lights were deployed on building exteriors for security and the safety of the maintenance team.



ABOVE & BELOW: The 25 hectare site in Dubbo was constructed to house the maintenance facility for Momentum Train's new regional train fleet. Maintenance is carried out inside the maintenance sheds and as well as on external platform areas. Tigerlight's lighting engineering team constructed a comprehensive lighting plan for all lighting - indoor and outdoor maintenance areas, roadways and carparks as well as security and perimeter lighting.



MEGAFLOOD LED FLOODLIGHTS

FLEXIBLE, MODULAR PLATFORM - LIMITLESS OPTIONS

- Common voltages and lens options heavily stocked
- Fully customisable to suit all applications
- Custom orders manufactured and shipped in 7-8 weeks.

240VAC, 415VAC or DC voltage

Remote driver option

16+ optical lens options, including symmetrical & asymmetrical

CRI options. CCT options include whites, RGB colours & amber

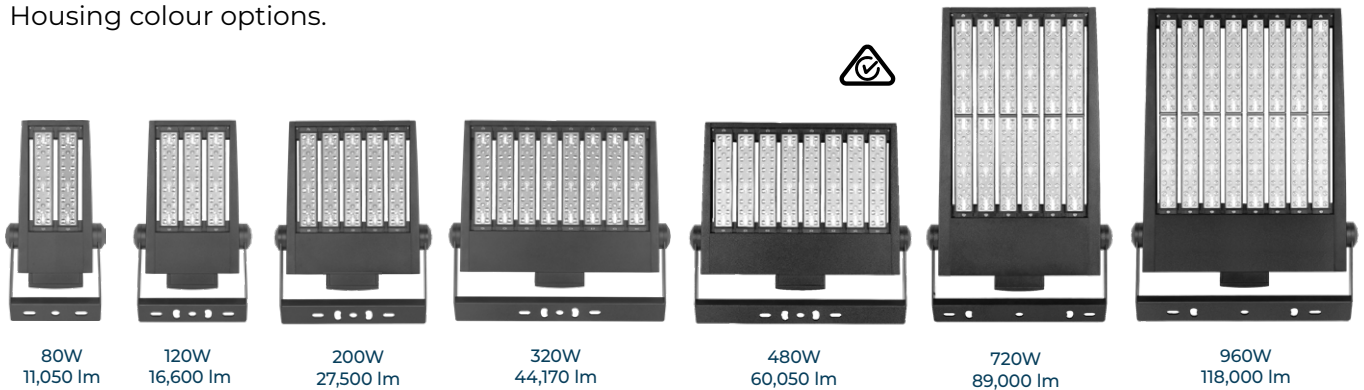
Lighting control options

Mounting bracket

Housing colour options.



**MEGA
FLOOD**



SENTRY WALL PACK LIGHT SENTRY EMERGENCY WALL PACK LIGHT

Industrial-quality high-performance wall-mounted luminaire

IP66 and IK10 rated for ultra-heavy duty

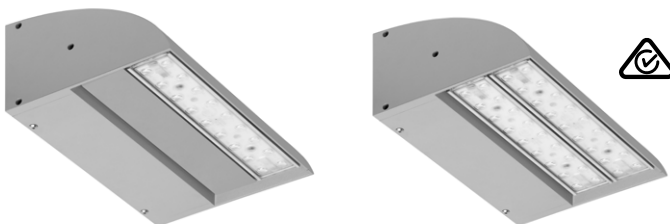
Efficacy 150+ lm/W

40W - 6,200 lm, 80W - 11,050 lm

Range of optical lenses to suit wide or narrow areas

Range of lighting controls available to suit application

Emergency option for additional level of safety and security.



SENTRY