

Case Study

BHP'S Nelson Point Operations in Port Hedland WA, is home to the largest iron ore loading port in the world, receiving iron ore for export from BHP mines including Newman, Yandi and Jimblebar, all by rail. Tigerlight was selected for a major lighting upgrade over the extensive rail network serving the rail lines, yard and train maintenance precinct.

Summary

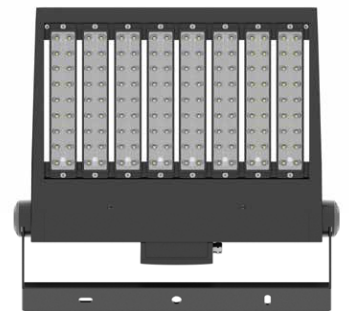
BHP wished to upgrade the lighting throughout its extensive Nelson Point Operations rail precinct - including lighting the vast network of rail tracks, rail yards and train maintenance areas.

Existing lighting was high pressure sodium floodlights, which produced an average of 10 lux.

BHP sought to replace the existing lights as they were deemed to be costly to run due to poor energy efficiency, while contributing significantly to maintenance costs due to replacing failed HPS lights, which were becoming obsolete. OH&S responsibilities were a major focus as lux levels were identified as being insufficient, particularly due to the growing number of failures.

BHP's objectives were to triple the average lux levels to 30 lux, while minimising glare. They also wished to maintain a warmer light temperature for environmental purposes.

MEGA
FLOOD



BHP

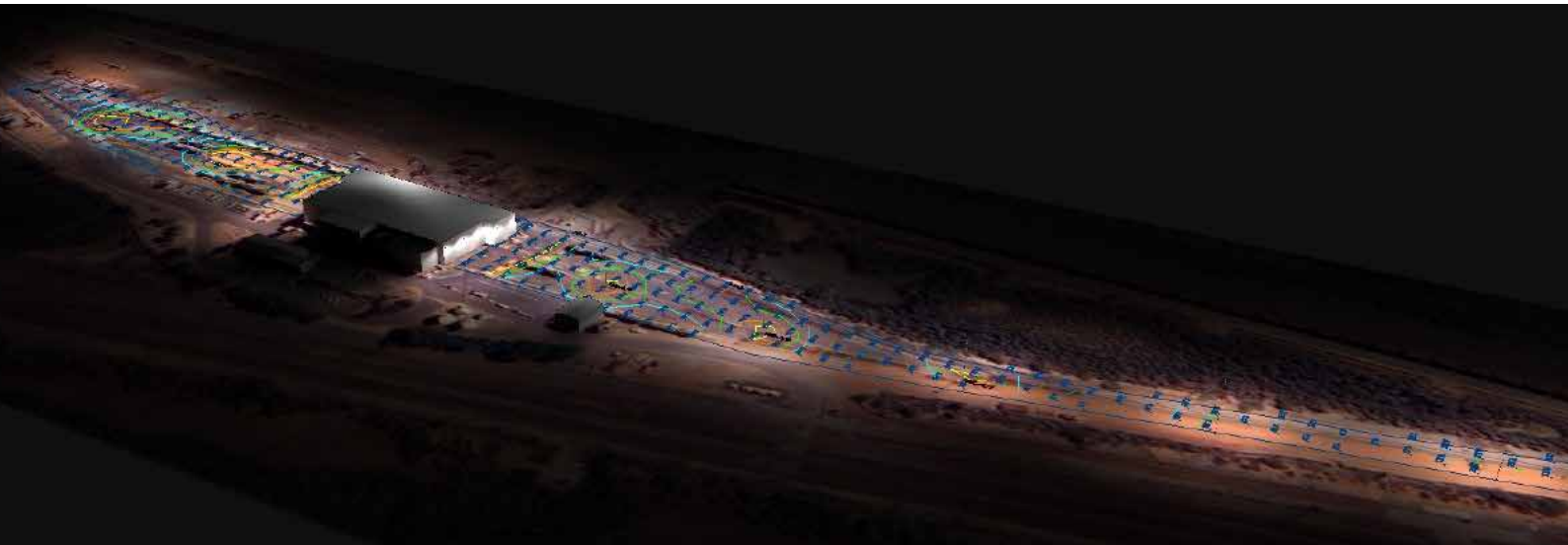
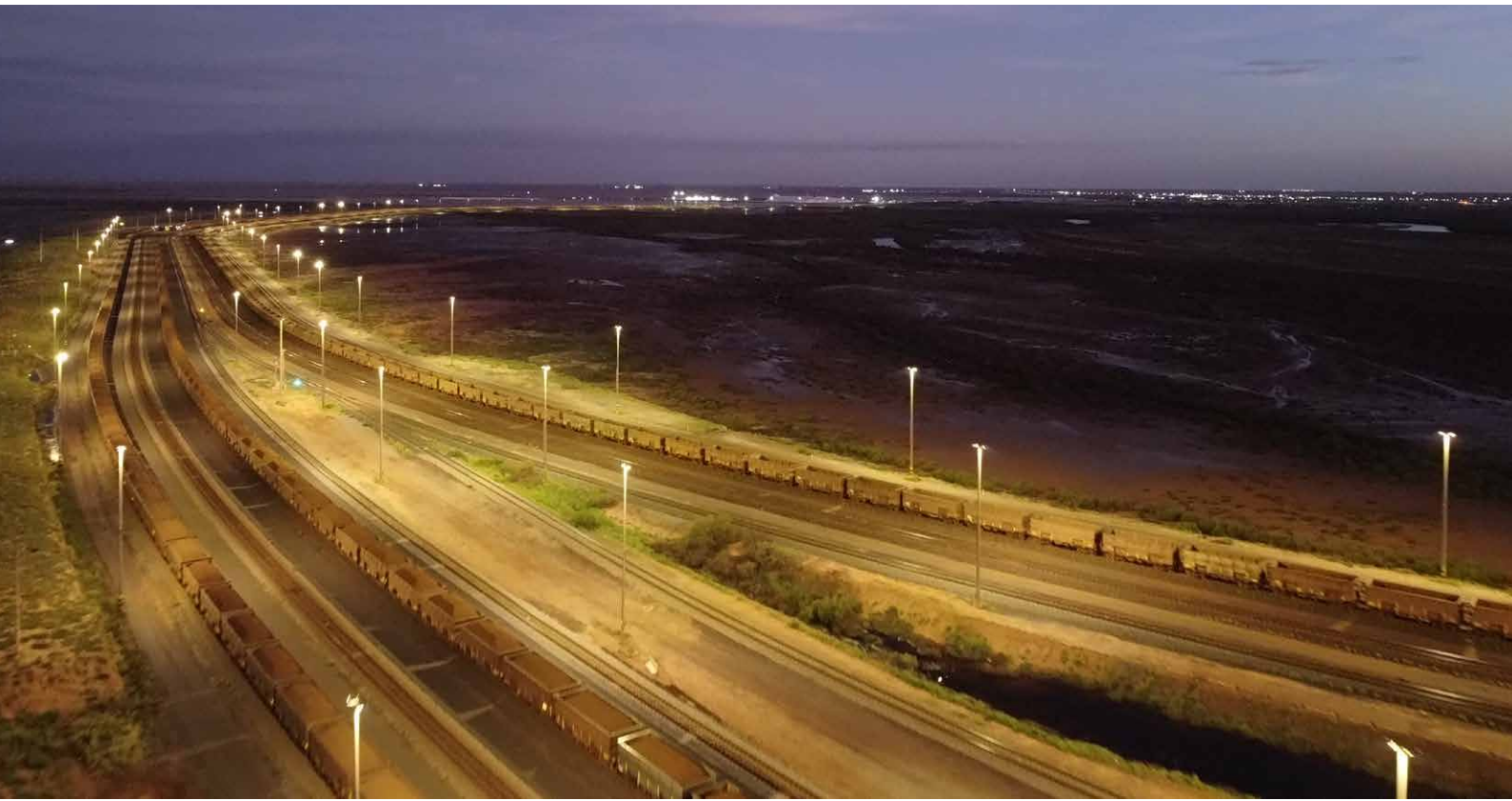
Solution

Tigerlight's in-house team of MIES-qualified lighting engineers developed a lighting plan to replace the existing 1000W HPS lights with 480W MegaFlood floodlights on existing poles.

Asymmetric T4M lenses were specified to produce the required average light level of 30 lux. 3000K Warm White was the colour temperature selected.

Over 550 luminaires were supplied into the rail precinct.

Very positive reactions were received from site managers and train drivers, noting excellent light levels, minimal glare, and a highly visible and safe working environment.

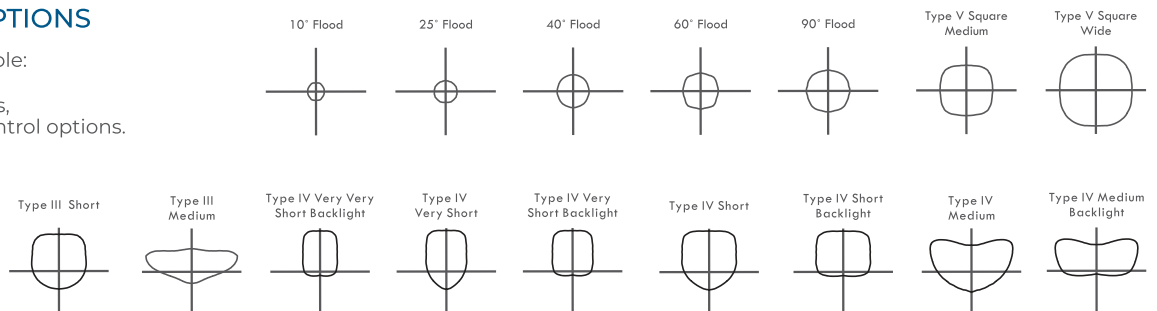


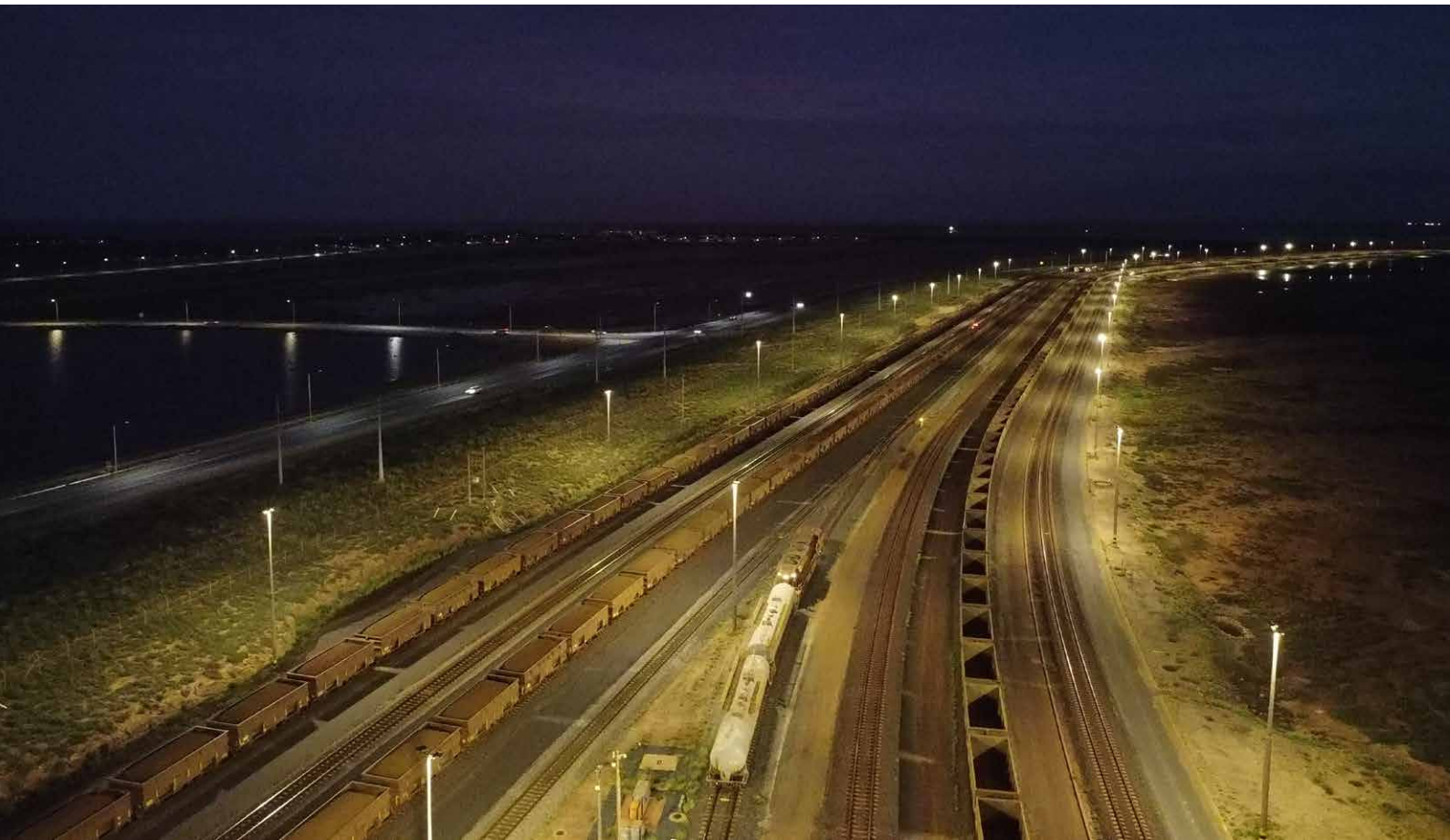
Previous page: Iron ore trains on well-lit tracks entering and departing BHP's Nelson Point port precinct.
 Above - top: Excellent uniformity and lux levels achieved with 480W MegaFloods replacing 1000W HPS lights.
 Above - bottom: Part of an in-house design render to achieve the objective of 30 lux average, using existing poles.



OPTICAL LENS OPTIONS

16 Optical lenses available:
 7 x Symmetrical lenses
 9 x Asymmetrical lenses,
 including Backlight Control options.





Well illuminated multi-track rail network enhancing a safe work environment throughout BHP Nelson Point port operations.

TAILOR-MADE
by tigerlight®



Individually designed and constructed to meet your exact requirements.

FLEXIBLE MODULAR PLATFORM OFFERS LIMITLESS OPTIONS

- Fully customisable to suit all applications
- Manufactured and shipped in 7-8 weeks.

From 20W to 1920W. From 3,000 to 221,000 lumens

7 different bracket choices for spigot, pole, wall or ceiling mounts

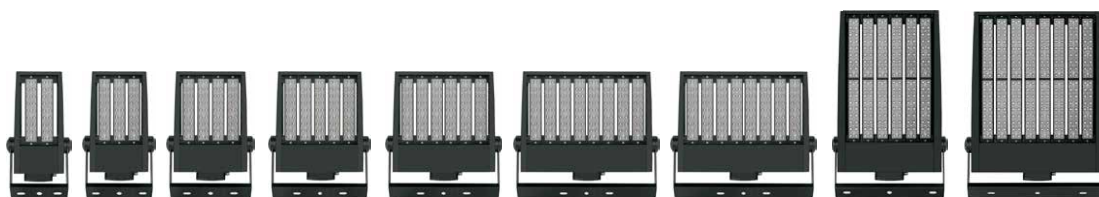
12-24VDC, 240VAC or 415VAC. Solar options

Remote driver options

16+ Optical lens options, including symmetrical & asymmetrical

CCT options include whites, RGB colours, amber & green

Unlimited housing colour options. Lighting control options.



MEGA
FLOOD

tigerlight®

tigerlight.com.au

T 1300 184 437
F 02 9913 8876
E info@tigerlight.com.au

LinkedIn Tigerlight Pty Ltd

All documentation is subject to change without notice.

National Support & Distribution Centre
Unit 8, 1 Vuko Place,
Warriewood, NSW 2102

TigerlightLED

© 20250319

Western Australia
Office & Warehouse
Unit 3, 1 Distinction Road,
Wangara, WA 6065

Australia-wide
Australian-owned