



## Case Study

Melbourne Aviation Precinct is setting new quality standards in the aviation service industry. Tiger's floodlights had to reach new heights to exceed expectations in an important lighting upgrade.



### Summary

Melbourne Aviation Precinct wished to update their lighting in their largest maintenance hangar, as well as along the adjacent taxiway and apron areas.

The outstanding output of Tiger MegaFloods combined with the wide range of lens and bracket options combined to create a very satisfactory solution for both internal and external requirements.

### Challenge Faced

MAP set out stringent standards for lux levels, glare, and uniformity as specified by CASA for the particular needs of the aviation service industry.

The hangar required 400 lux minimum across an area of 8000 m<sup>2</sup> at a mounting height of 22m.

External lighting over the adjacent taxiway and apron areas had to be downward facing and still provide the reach required, so lens choice was vital.



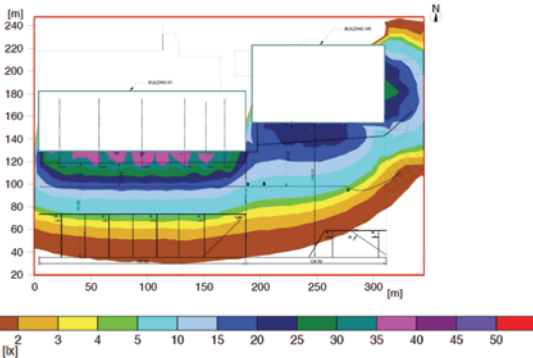
### Solution

There were 3 parts to this major lighting upgrade:

- Hangar lighting:  
42 x 750W MegaFloods mounted at 22m, replaced 42 x 1000W MH highbays and 17 x 2000W Floods. 60 degree lenses were recommended and wall brackets were used to fix the fittings below the gantries. The 400 lux requirement was exceeded. The bright 5,000K light has made a significant difference to the quality of light at the site.
- Apron and Taxiway lighting:  
13 x 450W MegaFloods mounted at 22m, replaced 13 x 1000W MH Floods on the sides of two of the large hangars. The light distribution was very even and extended out across the 80-100m width of the apron.



Above left and centre and right - illumination of external taxiway and apron areas, 80-100m deep.  
 Below left - fuel tanker depot lit by 3 x Primo 400W floods with area lenses.  
 Left centre - the main maintenance hangar lit by 42 x 750W MegaFloods with 60 degree round lenses mounted at 22m height.  
 Bottom left - Lighting plan schematic showing light distribution from forward throwing T4S lenses on 450W Tiger MegaFloods over the external areas.



### Tiger LED MegaFlood 750W

- 92,560 lumens at 120 lumens per watt
- Replaces up to 2000W HID
- Modular construction
- 2 bracket options
- 10 lens options
- IP67.



### Tiger LED MegaFlood 450W

- 56,300 lumens at 120 lm/W
- Replaces 1000W+ HID
- Modular construction with no glass
- Spigot mount bracket
- 10 lens options
- IP67.

**MEGA  
FLOODS**



### Solution - continued

- Fuel tanker depot:  
3 x 400W Primo PowerFloods mounted at 22m replaced 3 x 1000W MH floods where the required distribution was wider but shorter, to avoid spilling light onto the main taxiway.

### Primo 400W Powerflood

- 40,000 lumens at 100+ lm/W
- Replaces 1000W HID
- Area light lenses
- 45 degree lenses also available
- IP67
- Korean designed and made.



**primo**  
FIRST FOR HIGH PERFORMANCE  
LED HIGHBAYS