

Primo 9K/15K LED Canopy

9000 lumens 60W
15000 lumens 100W

INSTALLATION MANUAL

TIGERLIGHT
PRODUCT
ORDER CODES

CP9K60_4000K_PC, CP9K60_5000K_PC
CP9K60_4000K_GL, CP9K60_5000K_GL
CP15K100_4000K_PC, CP15K100_5000K_PC
CP15K100_4000K_GL, CP15K100_5000K_GL

PRODUCTION
SPECIFICATION
CODES

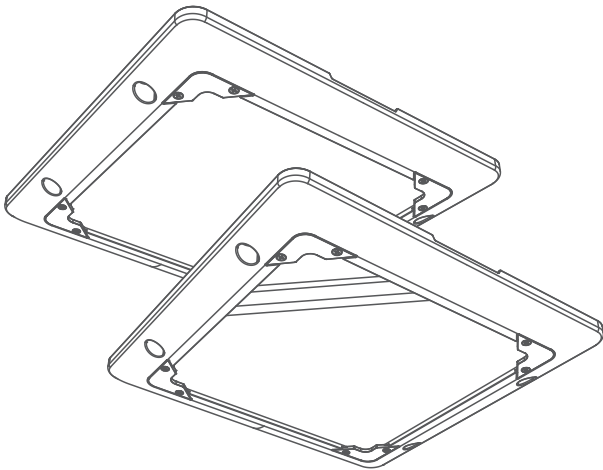
GCPSM604N1A11, GCPSM604N3A11
GCPSM604N1A10, GCPSM604N3A10
GCPSMA04N1A11, GCPSMA04N3A11
GCPSMA04N1A10, GCPSMA04N3A10

Canopy light Downward-lighting Installation Type : Surface mount



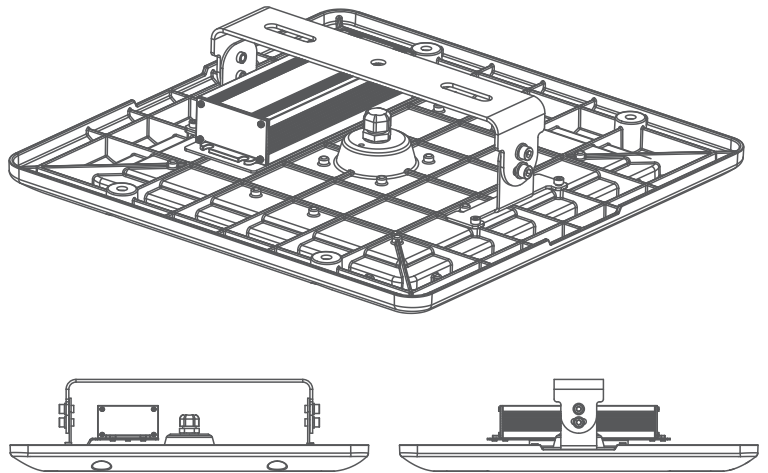
Components

Primo 9K/15K LED Canopy
PC Cover model



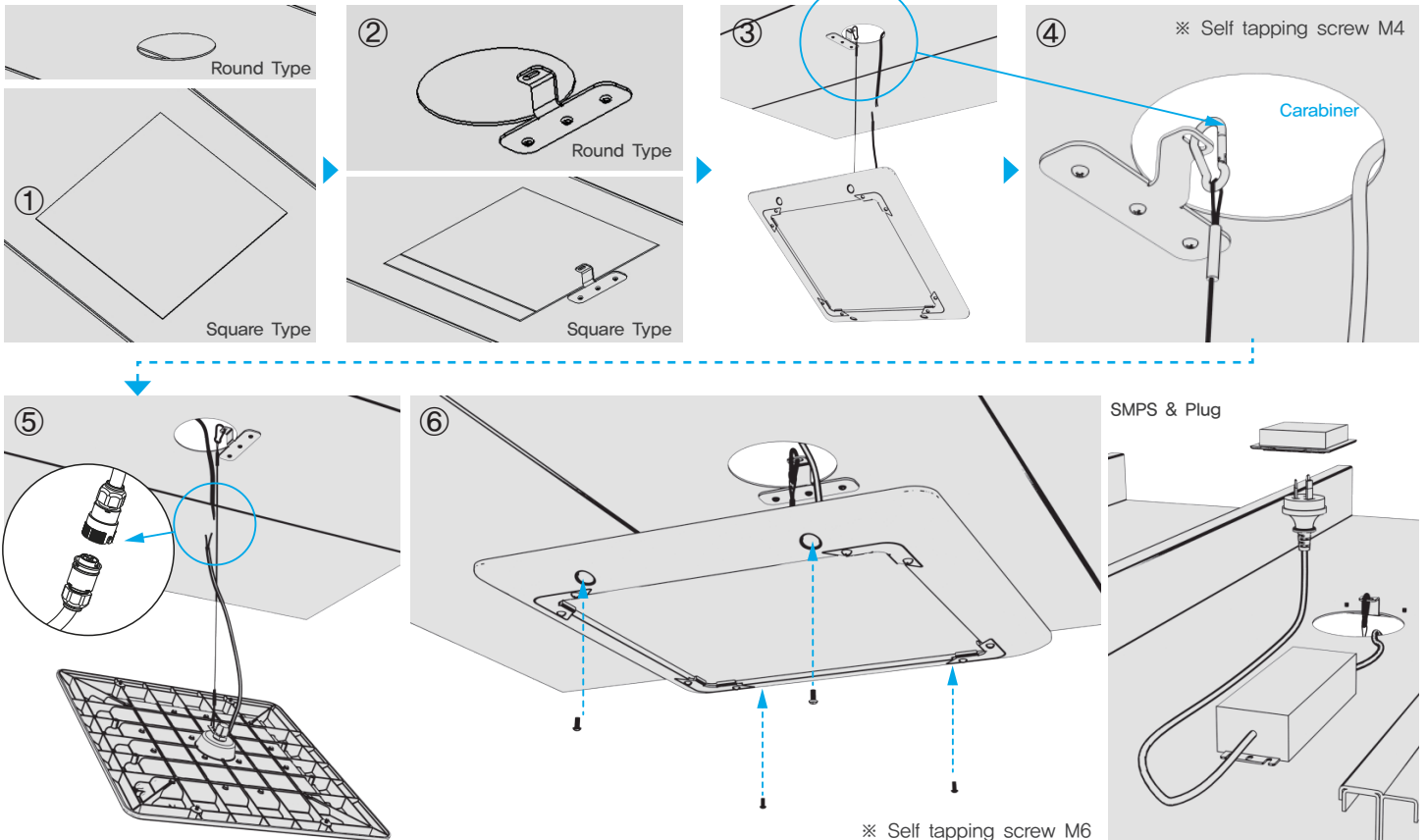
Primo 9K/15K LED Canopy
Glass Cover model

LED Canopy Bracket [Option]



Installation

1. Cut the deck into 4" hole. (Use 4" hole, 8/11" Square Hole after removal of existing lighting)
2. Secure the mounting bracket to fit the hole.
3. After AC wiring, Place SMPS on top of the deck.
4. Put the hook to the mounting bracket.
5. Connect the DC wire between the product and SMPS.
6. Close the product to the deck and secure the product with screws.



Notice before handling

- Do not arbitrarily assemble or disassemble.
- Installation and repairs must only be carried out by licensed electricians due to safety risks.
- During installation, follow the instructions as below.

Installation Warnings

- To avoid the risk of fire, explosion, or electric shock, this product should be installed, inspected and maintained by licensed electricians only, in accordance with the National Electrical Rules and local regulations.
- Ensure the supply voltage is the same as the rated voltage of the Bay Light.
- Be certain electrical power is OFF before and during installation and maintenance.
- Proper grounding is required.
- Take proper care while handling the unit to avoid impact and scratching of the lens surface.
- Do not allow foreign substances to accumulate on the lens
- Do not handle or move by grasping any electrical cable, as this may cause damage to internal connections.
- The determination as to suitability of this product is the responsibility of the end user.
- Using the product in a manner not recommended will void the warranty and may result in a dangerous condition, a degradation of performance, or a shortened lifespan.
- The product is not designed for use as an up-light. Usage in this manner may result in higher operating temperature and shortened lifespan.
- Use only in conditions where electrical supply is stable.
- Do not disassemble or make any modifications to the unit unnecessarily.
- Always install using safety wire.
- The unit may produce enough heat to support combustion if flammable objects are allowed to come in contact. Do not cover the light or deflect the beam with paper cloth or any other flammable material.
- During installation, care should be taken to reassemble the conduit cover correctly in order to maintain the IP rating. Any water damage caused by incorrect installation is not covered by the product warranty.
- Do not install the product in case of malfunction.
- Do not look directly at the light.
- Must be installed by licensed electricians in accordance with local wiring rules.
- The external flexible cable or cord of this LED Canopy light cannot be replaced. If the cord is damaged, it will cause the luminaire malfunction.
- In oil accumulated places, Glass cover is mandatory.

Factory Information

- GlowOne Co.,Ltd
Address : 19, Samsung 1-ro 3-gil, Hwaseong-si,
Gyeonggi-do, Republic of Korea
Tel +82-70-080-1472, Fax : +82-31-8064-3899

Contact

Proudly distributed by



Proudly distributed by



tigerlight®

1300 184 437

www.tigerlight.com.au