



# TIGER IP65 EMERGENCY BATTEN 40W 1200MM

## Installation Instructions



### RISK OF ELECTRIC SHOCK

It is illegal for persons other than an appropriately licensed electrician or other persons authorised by legislation to work on the fixed wiring of any electrical installation.

- To comply with all safety standards, the product must be used only for the purpose described in this instruction and must be installed in accordance with the wiring rules and regulation in the location where it is installed.
- Hazardous voltage may be present at the wire leads of this product.
- Lock out and tag the input circuit before accessing the wiring connections.

**Failure to follow these instructions will result in death or serious injury.**

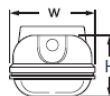
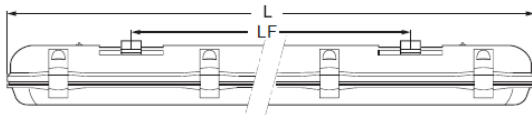
- The product is class 1.
- Check whether the product has been damaged during transport. Do not operate/install any product which appears damaged in any way. Return the complete product to the place of purchase for inspection, repair or replacement.
- Take care not to pull any electrical wires during unpacking as this may damage the connection.
- Isolate the electrical supply before commencing any work on this equipment.
- Select a suitable location for installation. This product is rated for ingress protection to IP65.
- There are no user serviceable parts inside the product.



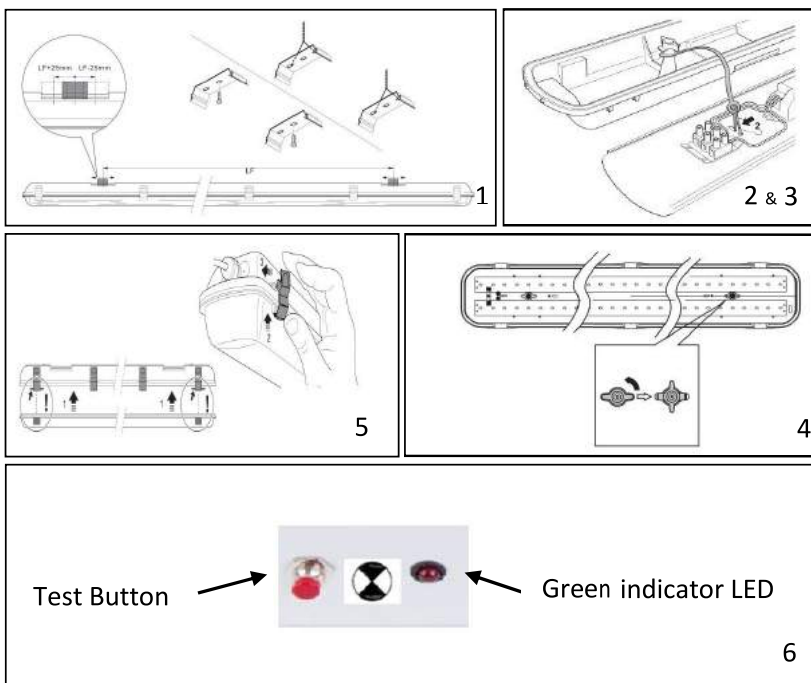
### RISK OF BURN INJURIES

During and after use, the product may be hot. Do not touch the product before it has completely cooled down.

Order code:	PYW1200DL-EM		
Voltage Rating	240 V a.c., 50 Hz	Operating temperature	0°C to + 40°C
LED Power	40 W	Operating humidity	+10% to +85% RH, non condensing
Total System Power	44 W	Battery Type	LiFePO4
Lumens	3800 lm	Operation Mode	Non Maintained
Colour Temperature	6000K	Testing System	Manual Test Button
CRI	> 80	Charging Time	16 hours
IP rating	IP65	Duration	2 hours
IK rating	IK08	Charging Type	Trickle Charge
LED Lamp Life (L70)	50,000 hrs	Charger Operation	Continuous
Size (LxWxH)	1274x140x90 mm	Weight	2.65 kg
Length between mounting centers (LF)	900 mm		Made in China



1. Select desired location to mount LED Weatherproof Batten. Measure and mount included mounting clips to the desired surface.
2. Open luminaire by releasing the clips holding the diffuser and remove gear-tray ensuring lanyard is still connected between gear tray and luminaire body.
3. Terminate mains cable to terminal block on the gear-tray. Note: switched active (L2) and un-switched active (L1). Reconnect plug between battery and inverter.
4. Secure the gear-tray using the twist locks.
5. Position the diffuser and secure using the clips provided.
6. Test the installation in accordance with the wiring rules that are applicable for electronic products. Connect power to luminaire. The green LED indicator will illuminate. Allowing 16 hours for batteries to charge, press the test switch to simulate a power failure and the luminaire will illuminate in the emergency mode.



IP65

