



tigerlight®

Leaders in energy efficient lighting



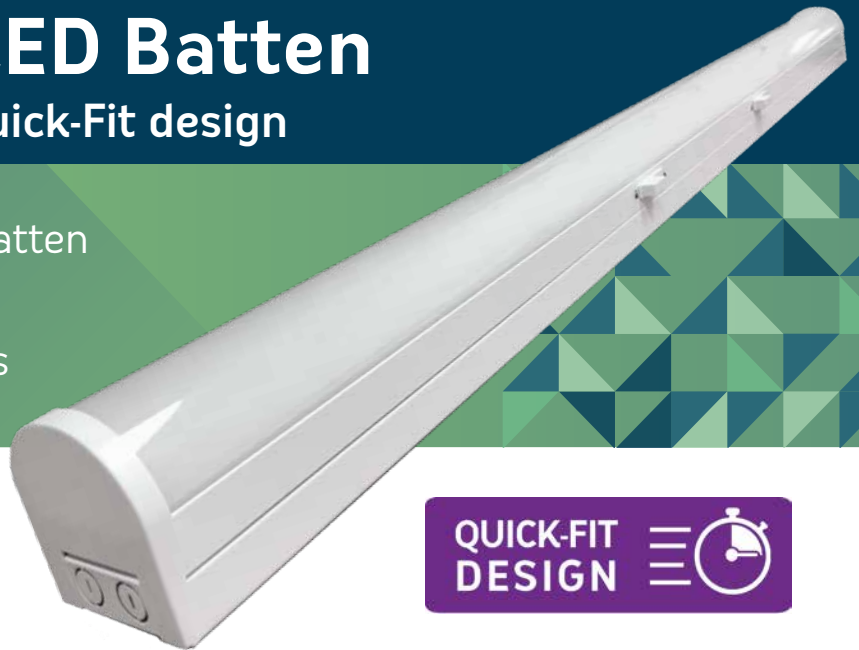
# Tiger Quick-Fit LED Batten

## Linear LED batten - 36W - Quick-Fit design

Replaces 2 x 36W fluorescent batten

Exclusive Quick-Fit design

Bright white light - 4300 lumens



### Quality diffused linear LED batten

Linear-style - no tubes  
Extra-bright 4300 lumens output  
30,000+ hours service life with 3 year warranty.

### Exceptional value for money

Low purchase cost for quality LED batten  
Energy efficient - saves up to 60% compared to fluoro batten.

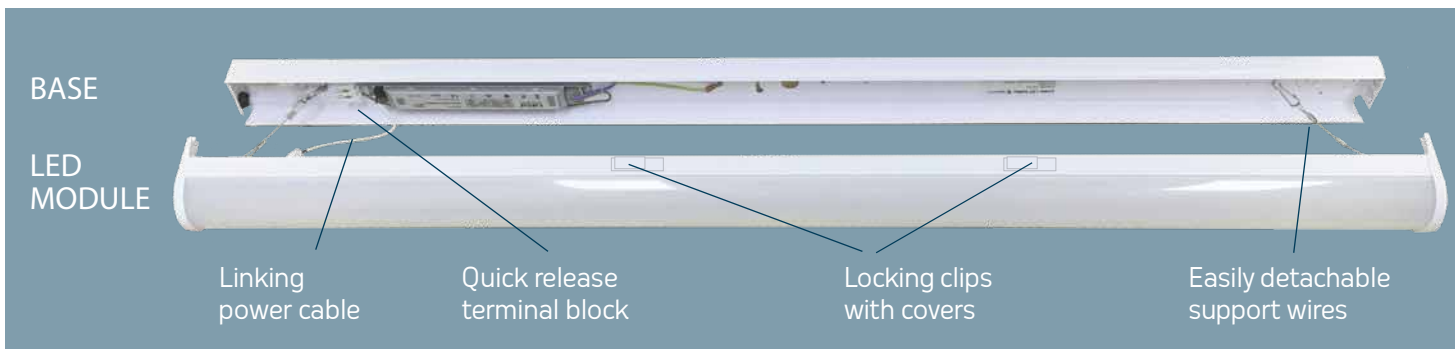
### Exclusive Quick-Fit design for faster 3 step installation

Unique two part batten with quick release connectors  
Fast installation and easy access for any future maintenance.



### Applications

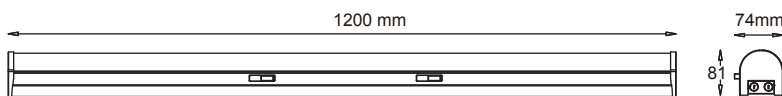
Multi purpose, energy-efficient diffused batten for internal use. Surface mounted or suspended. Where speed of installation is important. For warehouses & factories, offices, schools, libraries, car parks, restrooms, corridors, basements, food preparation areas.



### Easy to daisy-chain battens end-to-end

Double terminal block for running cable to next batten  
Easy access through batten end-caps.

### Sleek, low profile design



### Technical parameters

Format	Diffused linear LED Batten
Power consumption	36W
Fluorescent T8 equivalent	2 x 36W plus ballasts
Lumen output	4300 lm
Colour temperature	5000K Natural White
Colour rendering index (CRI)	80
Input voltage	100-240V AC, 50/60Hz
Power Factor / THD	≥0.90 / ≤20%
Service life	50,000+hours
Operating temperature	-20 to 40°C
Construction - Diffuser	Frosted polycarbonate diffuser
Construction - Tray	Powder coated steel
IP rating	IP20
Dimensions mm	1200 L x 74 W x 81 H
Weight	2.3kg
Order Code:	PEL1200NW (5000K only)



tigerlight®

www.tigerlight.com.au

t: 1300 184 437  
f: 02 9913 8876  
e: info@tigerlight.com.au

National Support Centre:  
Unit 8, 1 Vuko Place,  
Warriewood,  
NSW, 2102

Local branches in Sydney  
& NSW North Coast,  
Melbourne, Brisbane,  
Adelaide, Perth



# Tiger Quick-Fit LED Batten

## Quick-Fit installation instructions



### SIMPLE **3** STEP INSTALLATION

#### 1. Connect the base

- Fix base section of the batten to the ceiling
- Connect the AC power cable to the quick-release terminal block, either through the top or via the end cap.

#### 2. Join the two halves

- Connect the LED module to the base section with the two wire ropes to support the weight
- Join the ends of the internal power cable together
- Test the light.

#### 3. Lock the two halves together

- Lock the two locking clips inside the LED module to secure the batten
- Cover the locking arms with the white plastic caps provided.



EXCLUSIVE TO TIGERLIGHT

