



Tiger LED Street/Area Light

30W 60W 90W 120W 150W - 300W fittings available on special order

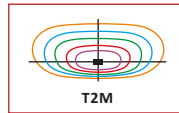
Class-leading performance - **now 140 lm/W**
 Highest quality components
 Built for ultra-dependable performance.



▲ Pictured: 90W fitting

Class-leading light output

Super-efficient 140 lumens/watt
 4,280 lumens (30W) - 16,540 lumens (120W)
 Batwing lenses (T2M) are standard
 Range of other lens options available on special order for area lighting applications (eg T3M & T4S).



Premium components for ultimate reliability

Top performance Cree XPG3 LEDs & renowned Xitanium driver
 10KV surge protection
 50,000+ hours life, 5 year warranty.

Compact modular design

Lower cost of manufacture from economies of scale
 Efficient heat management dimensions.

Robust, glass-free construction

IP67 rating for dust and water exposure
 IK08 rating for impact & vandal resistance
 Polyester-coated aluminium casing
 Stainless steel fascia on modules (304 grade)
 Polycarbonate optical lenses.

Applications

- Street lighting and area lighting
- Private roads, rail networks, hospitals, university grounds, shopping centres
- Car parks, forecourts & plaza areas.



Fully tested and certified

IES files & photometric profiles available.
 TUV reports available for following standards:

IEC /EN 60598-1: 2008	IEC /EN 60598-2-3/A1: 2011
EN 62493:2010	IEC62471: 2008
IEC62471-2:2009	EN 55015: 2013
EN61547:2009	EN61000-3-2/A2:2009
EN 61000-3-3:2013	(EU) 1194/2012:2012-12-12
(EC) 244/2009:2009-03-18	

ENEC: No.: U6140888771007
CB: No.: SG-LE-0095

IK08 rating, 3G vibration, 1000 hours salt mist test reports furnished upon request.



Practical installer-friendly design



- Easy to open for quick installation.
- One 6mm allen key fits all bolts. Bolts cannot fall to ground.
- Fittings contain built-in spirit levels to simplify installation.
- WAGO press-release connectors present for quick and easy installation.



- Spigot is assembled for a horizontal tenon mount. Reverse the spigot assembly for vertical pole mount.
- Spigot is adjustable -20° to +20° from the horizontal or vertical position to allow for tilting if required.



Tiger LED Street/Area Light

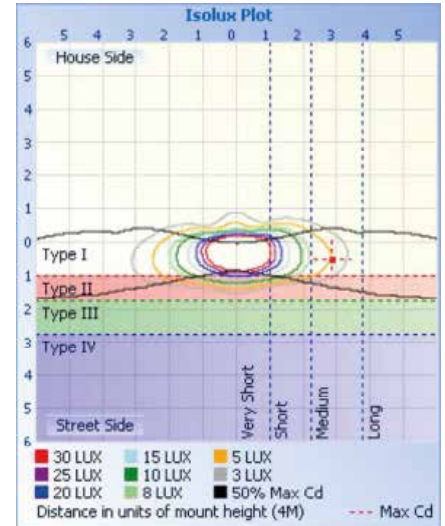
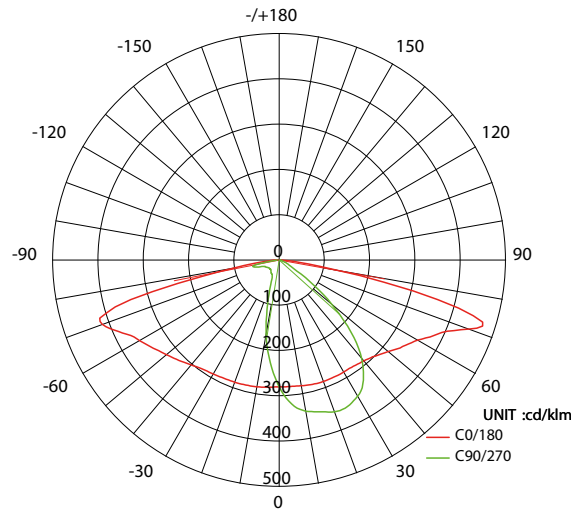
30W 60W 90W 120W 150W - 300W fittings also available on special order

Photometrics

Standard lens type:
Code T2M1.
IES Classification
Type II Medium.

Other lenses available
as special order items:

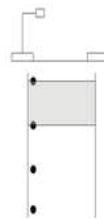
Type I Medium	10 degrees round
Type II Medium	25 degrees round
Type III Medium	40 degrees round
Type III Long	60 degrees round
Type IV Short	90 degrees round
	120 degrees round
	Diffused



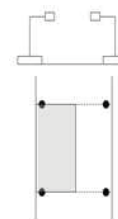
Streetlighting guidelines

	30W		60W		90W		120W	
Mounting Height (metres)	6	8	8	10	10	12	12	
Pole arrangement (see below)	SR	SR	SR	SR	SR	DR	SR	DR
Area illuminated (LxW metres)	20X5	28X7	28X7	35X10	35X10	40X14	40X14	45X22
Average illuminance (Eav lux)	26	13	25	16	26	25	21	19

Pole arrangement
SR / DR (above)



SR
Single sided
row arrangement



DR
Double row
opposing pole
arrangement

Technical parameters

	30W	60W	90W	120W
Power consumption: System/LED	30W / 27W	61W / 54W	94W / 86W	123W / 115W
Comparable metal halide	70-100W	150-200W	250-300W	250 - 400W
Input voltage & frequency	AC 120-277V / 50-60Hz	AC 120-277V / 50-60Hz	AC 120-277V / 50-60Hz	AC 120-277V / 50-60Hz
Input current / Power factor	530mA / ≥ 0.95	530mA / ≥ 0.95	530mA / ≥ 0.95	530mA / ≥ 0.95
LED chips / driver	Cree XPG3 / Xitanium	Cree XPG3 / Xitanium	Cree XPG3 / Xitanium	Cree XPG3 / Xitanium
Luminous Flux / efficiency	4,280 lm / 140 lm/W	8,660 lm / 140 lm/W	12,460 lm / 140 lm/W	16,540 lm / 140 lm/W
Colour temperature / CRI	5,000K / Ra>70	5,000K / Ra>70	5,000K / Ra>70	5,000K / Ra>70
Light distribution	IESNA Type II Medium	IESNA Type II Medium	IESNA Type II Medium	IESNA Type II Medium
IP Rating / Working temperature	IP67 / -50 ~ +60°C	IP67 / -50 ~ +60°C	IP67 / -50 ~ +60°C	IP67 / -50 ~ +60°C
Service life	≥ 50,000 hours	≥ 50,000 hours	≥ 50,000 hours	≥ 50,000 hours
Composition - lenses	Polycarbonate	Polycarbonate	Polycarbonate	Polycarbonate
- Housing/heat sink	Aluminium	Aluminium	Aluminium	Aluminium
- Protective coating on housing	Polyester (100µm min)	Polyester (100µm min)	Polyester (100µm min)	Polyester (100µm min)
- Front fascia on modules	Stainless Steel (304)	Stainless Steel	Stainless Steel	Stainless Steel
Spigot - Inner Diameter / Length	62 mm ID / 120mm L	62 mm ID / 120mm L	62 mm ID / 120mm L	62 mm ID / 120mm L
Pole-arm/horiz tenon Outer Diam	42-60mm OD	42-60mm OD	42-60mm OD	42-60mm OD
Weight / Dimensions LxWxDmm	6.5kg / 463 x 345 x 117mm	7.1kg / 523 x 345 x 117mm	8.2kg / 583 x 345 x 117mm	8.9kg / 643 x 345 x 117mm
Product order code	SA030	SA060	SA090	SA120