

# primo<sup>4</sup>

PowerFlood  
400W LED



Serious light output.  
For serious lighting  
applications.



**40,000**  
lumens

Lamp power 385W

100+  
lm/W



- Genuine replacement for 1000W HID
- Class-leading design and performance
- Quality Korean-engineered, to go anywhere
- Long, maintenance-free service life
- Lens and bracket options for total versatility.

Wall/Pole mountable bracket



Ceiling mountable bracket



Designed and  
made in Korea

# primo<sup>4</sup>

 **tigerlight**<sup>®</sup>

Leaders in energy efficient lighting



# Primo PowerFlood

## 400W Industrial LED Floodlight

40,000 lumens output  
 Genuine replacement for 1000W HID  
 Exceptional build quality.



Class leading light output - 40,000 lumens  
 at over 100 lumens/watt

Excellent option for replacing 1000W to 1500W HID  
 floods in most situations.

### State-of-the-art LED technology

World-leading power supply technology by Inventronics  
 High efficiency Philips Lumiled LED chips  
 Korean-designed and built to exacting quality standards.

### Dependable long-life performance even in difficult operating conditions

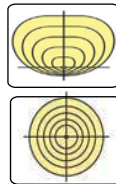
Service life 50,000+ hours, from -30 to 50°C.  
 IP67 protection from moisture and dust  
 Lower cost of ownership, inc labour & access equipment.



### Choice of lenses to suit most applications:

Area lens: Asymmetric IESNA Type IV lens  
 for floodlighting wider areas from walls/poles

45 degree round lens: more concentrated light in  
 a smaller area, and as highbays in high ceilings.



### Choice of stainless steel brackets to suit all applications.

▲ Wall/pole bracket option  
 For wall or pole installations  
 - interior or exterior.

▲ Ceiling-mount bracket option  
 For high horizontal mounts  
 - interior or exterior.

## primo<sup>+</sup>

### PowerFlood

#### 400W LED

### Applications

Exterior and interior lighting, wherever 1000 to  
 1500W HID lighting would have been used in the past.  
 Very high applications where exceptional  
 lumen output is required, including mining, heavy  
 manufacturing, dock precincts, tank storage areas,  
 transport hubs, carparks, sporting venues, etc.  
 Hot, moist and dusty environments.

### Technical parameters

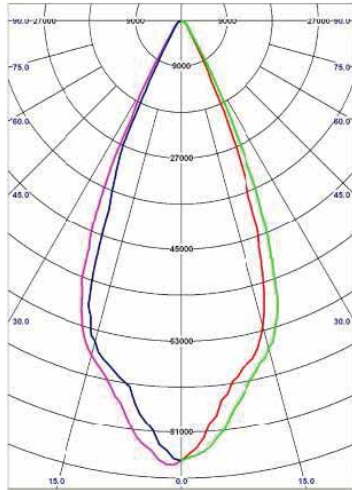
|                            |                                 |
|----------------------------|---------------------------------|
| Total power consumption    | 385W                            |
| Input voltage / frequency  | 100-277V / 50/60Hz              |
| Power factor               | ≥0.9                            |
| Surge protection           | 6kV L-G / 4kV L-L               |
| Driver / LED chip spec     | Inventronics / Philips Luxeon M |
| Lumen output               | 40,000 - 42,000 lm              |
| Lens type - Area light     | IESNA Type IV area light lens   |
| - Round lens               | 45 degree beam angle            |
| Luminous efficiency        | >100 lm/W                       |
| Colour temperature         | 5,000°K                         |
| CRI                        | >70                             |
| IP rating                  | IP67                            |
| Operating temperature      | -30 to +50°C                    |
| Service life               | 50,000 hrs+                     |
| Construction - Body        | Diecast Aluminium               |
| - Bracket                  | Stainless steel                 |
| - Lens                     | Tempered glass                  |
| Anticorrosive coating      | Powder coated                   |
| Weight                     | 15.0kg plus bracket             |
| Dimensions (Diam x Height) | 480 x 406 x 162mm               |
| Product codes              | Wall/pole mount Ceiling mount   |
| - Area light lens          | FP400AW FP400AC                 |
| - 45 degree beam           | FP40045W FP40045C               |



# Primo 400W LED PowerFlood

## Illuminance - 45 degree lens & Area light lens

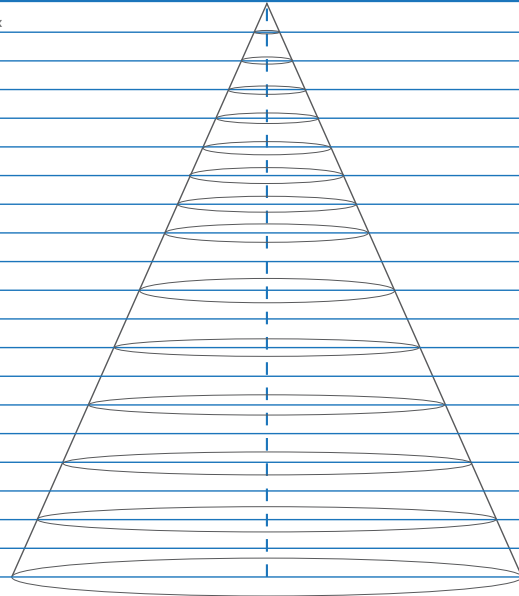
### 45 DEGREE LENS



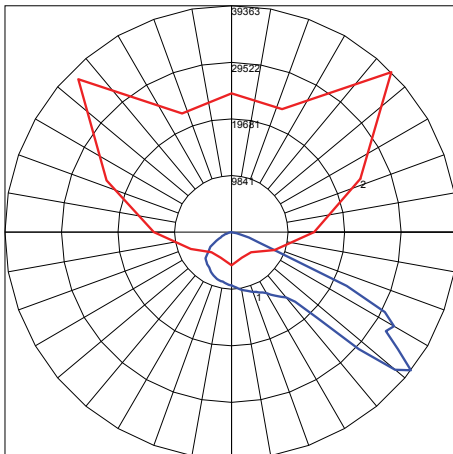
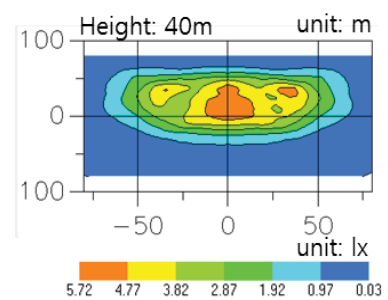
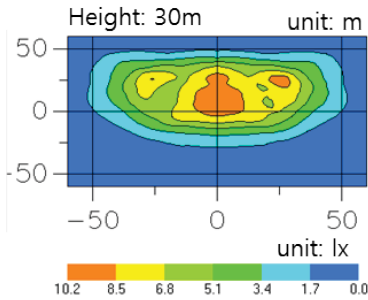
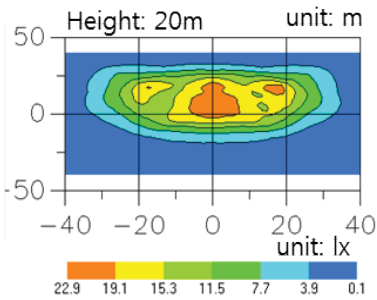
Beam Width / Lux in center

Height

|                  |     |
|------------------|-----|
| 1.6m / 20540 lux | 2m  |
| 3.3m / 5135 lux  | 4m  |
| 5.0m / 2282 lux  | 6m  |
| 6.6m / 1284 lux  | 8m  |
| 8.3m / 822 lux   | 10m |
| 10.0m / 571 lux  | 12m |
| 11.5m / 419 lux  | 14m |
| 13.2m / 321 lux  | 16m |
| 14.8m / 254 lux  | 18m |
| 16.5m / 205 lux  | 20m |
| 18.1m / 170 lux  | 22m |
| 19.8m / 143 lux  | 24m |
| 21.4m / 122 lux  | 26m |
| 23.1m / 105 lux  | 28m |
| 24.7m / 91 lux   | 30m |
| 26.4m / 80 lux   | 32m |
| 28.0m / 71 lux   | 34m |
| 29.7m / 63 lux   | 36m |
| 31.3m / 57 lux   | 38m |
| 32.9m / 51 lux   | 40m |



### AREA LIGHT LENS - ASYMMETRIC IESNA TYPE IV



Maximum Candela = 39362.7 Located At Horizontal Angle = 45, Vertical Angle = 52.5  
 #1 - Vertical Plane Through Horizontal Angles (45 - 225) (Through Max. Cd.)  
 #2 - Horizontal Cone Through Vertical Angle (52.5) (Through Max. Cd.)

primo  
PowerFlood  
400W