

## SCENE MODE

There are 4 PRE-SET SCENE MODES built in to the remote control to simplify settings for common applications:

Four scene modes for end-user selection:

| Scene Selection | Detection range | Delay time | Waiting time | Waiting brightness | Light sensor value |
|-----------------|-----------------|------------|--------------|--------------------|--------------------|
| SC1             | 100%            | 30s        | 60s          | 10%                | 2Lux               |
| SC2             | 100%            | 5min       | 10min        | 10%                | 10Lux              |
| SC3             | 100%            | 10min      | 30min        | 10%                | 50Lux              |
| SC4             | 100%            | 30min      | + ∞          | 10%                | Disable            |

Note: End user can press any "detection range / hold time / daylight sensor / stand-by period" key to adjust the settings.

### Detection range

Press the buttons of "detection range" to set detection range at 100% / 75% / 50% / 20%.

### Hold-time

Press the buttons of "hold-time" to set hold-time at 5s / 30s / 1min / 3min / 5min / 10min / 20min / 30min .

### Daylight sensor

Press the buttons of "daylight sensor" to set daylight threshold at 2Lux / 10Lux / 30Lux / 50Lux/ 80Lux/ 120Lux/ disable.

### Stand-by period (corridor function)

Press the buttons of "stand-by period" to set stand-by period at 0s / 10s / 30s / 1min / 5min/ 10min / 30min / + ∞.

Note: "0s" means on/off control; "+ ∞" means bi-level dimming control.

### Stand-by dimming level

Press the buttons of "stand-by dimming level" to set the stand-by dimming level at 10% / 20% / 30% / 50%.

## 4. Mounting accessories

| Accessories | IMAGE | DESIGNTION       | MATERIAL        | DESCRIPTION         | QUANTITY | ACCESSORY USE  |
|-------------|-------|------------------|-----------------|---------------------|----------|--|
| Standard    | 01    | METAL BRACKET    | Stainless steel | 62x35x17.2mm        | 2PCS     | Used for the absorption of Suspending and Ceiling Mounted. |
| Standard    | 02    | SCREW            | Stainless steel | 4x20mm              | 4PCS     | Used for the absorption of Ceiling Mounted.                |
| Optional    | 03    | SUSPENDING CABLE | Stainless steel | 1M/1.2M/1.5M/3M     | 2PCS     | Used for the absorption of Suspending.                     |
| Optional    | 06    | Remote control   | PC              | Control range 14x8M | 1PCS     | You can control the use of multiple lamps.                 |

www.tigerlight.com.au  
Phone 1300 184 437

 **tigerlight**  
High-performance industrial lighting

# Silverback IP65 LED Batten

## INSTALLATION MANUAL

### 20W - 600mm • 40W - 1200mm

NB Optional built-in microwave sensor, if fitted, can only be programmed via remote control supplied separately. See pages 3 & 4 for more information.



### Important notes

Before installing the lighting fixtures, please read this instruction manual carefully.

The lighting fixtures should be installed, connected and tested by a certified installer based on the local regulations.

Lamps should always be installed or replaced with care.

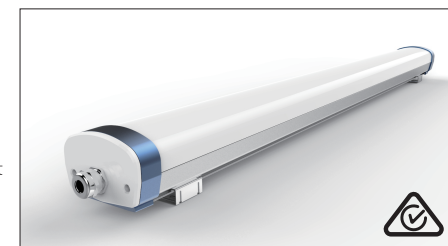
Please check the local voltage in accordance with the product requirements before using the product.

Relamping only can be done when the power is off and the lamp is completely cooled down.

When a lamp is to be cleaned, make the power off and let it cool down completely. Clean the fixture with a soft cloth and a standard PH neutral detergent. Stainless steel finishing should be maintained regularly.

Misuse of, or changes to the fixture shall nullify the guarantee.

Don't cover the fixtures with flammable materials.



Temperature Characteristics T-ambient 25 °C

### Temperature

Operating -20~+40 °C

Storage -40~+85 °C



Electrical Characteristics

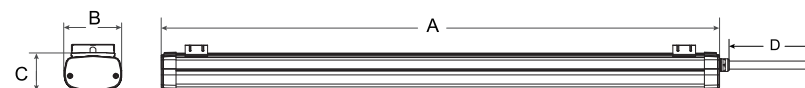
### Input Voltage:

AC220-240V 50/60Hz

PF:≥0.93 THD<20%

Power Efficiency:≥0.87

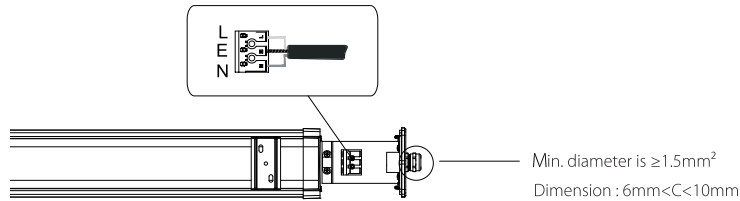
## 1. Product dimensions



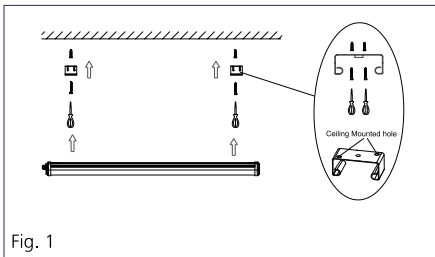
| Size A(mm)  | Size B(mm) | Size C(mm) | Size D (mm) |
|-------------|------------|------------|-------------|
| 2FT(600mm)  | 83         | 55         | 1000        |
| 4FT(1200mm) | 83         | 55         | 1000        |

## 2. Installation

### Wiring of slide-out quick connector

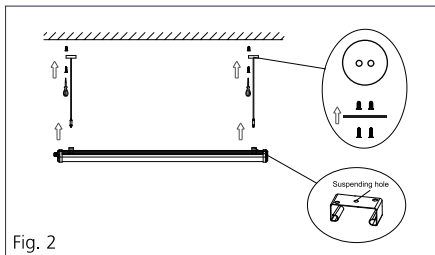


### Mounting instructions



#### 1 Ceiling Mounted

- Make a right position and screw hole
- Screw the clip on the ceiling tightly
- Install the lamp into the clips.
- Adjust the position of the fixture and clean it.



#### 2 Suspending

- Make a right position and screw hole
- Screw the steel cable onto the ceiling
- Hang the fixture under the steel cable and secure the fixture by steel cable
- Adjust the position of the fixture and clean it.

- Please note: All operations must be conducted with the power switched off.



The luminaires are intended for indoor use or under shelter for outdoor use.

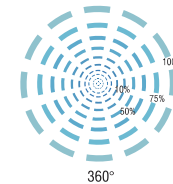


## 3 Microwave sensor operation (if built-in sensor is fitted)

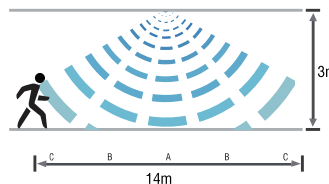
### 1. Detection coverage

#### Ceiling Mounted

##### Top View

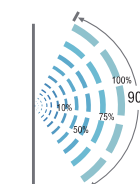


##### Side View

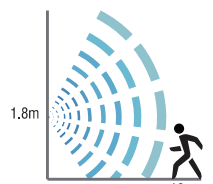


#### Wall Mounted

##### Top View



##### Side View

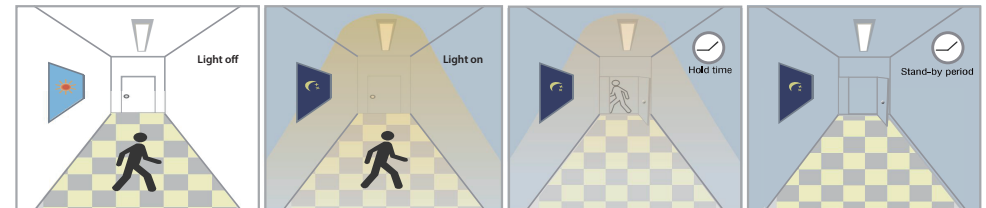


NOTE: Above detection coverage is recommended. Actual coverage may vary depending on luminaire configuration and environmental conditions.

### 2. Application

The HT57V can directly control the connected light by sensing the presence and movements of the occupant without requiring unobstructed line-of-sight. It is mounted inside of an enclosed lighting fixture for an elegant fixture design, and also makes the sensor suitable for applications such as an open office with partitions, a library reading area with cubicles, a restroom with stalls, etc.

#### Function Demo - Dimmable control / Corridor function



When motion detected, but sufficient daylight, Light remains OFF.

When motion detected, and insufficient daylight, Light ON.

After last detection, the light will be dimmed down to the stand-by dimming level (10%, 30%, 50%).

After the stand-by period, Light OFF.

### 3. Remote control



**ON/OFF function**  
Press the "ON/OFF" button - the light remains permanently on or off.  
\* Press "Auto Mode", "RESET" or "Scene mode" buttons to quit from this mode.



**Auto Mode**  
Press "Auto Mode" button - the sensor starts to work and all settings remain the same before the light gets switched on/off.



**Reset function**  
Press "RESET" button - products with DIP switch will take DIP switch; otherwise initial settings will apply - which is 100% detection range, hold time 5S, no stand-by time and daylight threshold disabled.



**Test mode**  
The button "Test (2s)" is for testing purpose after commissioning. Pressing this button, the sensor goes to test mode (hold time is only 2s) automatically, stand-by period and daylight sensor are disabled.  
This mode can be ended by pressing "reset", "Auto mode", "scene mode" or "hold time". The sensor setting is changed accordingly.

