

Primo 9K/15K/23K LED Canopy Light

9000 lumens	60W
15000 lumens	100W
23200 lumens	145W

INSTALLATION MANUAL

TIGERLIGHT
PRODUCT
ORDER CODES

CP9K60_4000K_PM, CP9K60_5000K_PM
CP9K60_4000K_GL, CP9K60_5000K_GL
CP15K100_4000K_PM, CP15K100_5000K_PM
CP15K100_4000K_GL, CP15K100_5000K_GL
CP23K145PM

PRODUCTION
SPECIFICATION
CODES

GCPSM604N1A12, GCPSM604N3A12
GCPSM604N1A10, GCPSM604N3A10
GCPSMA04N1A12, GCPSMA04N3A12
GCPSMA04N1A10, GCPSMA04N3A10
GCPSMA54N3AP2

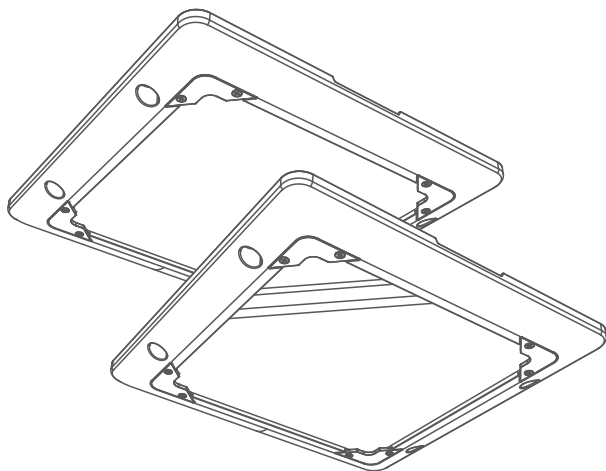


Canopy light Downward-lighting Installation Type : Surface mount



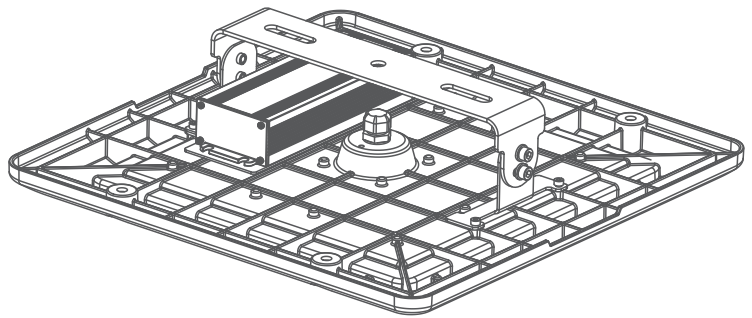
Components

Primo 9K/15K/23K LED Canopy
PMMA Cover model

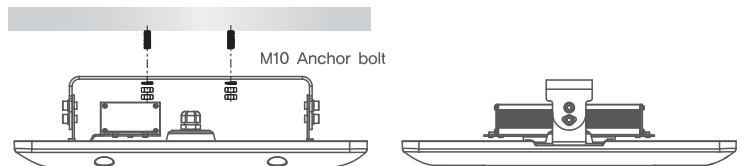


Primo 9K/15K LED Canopy
Glass Cover model

LED Canopy Bracket [Option]



Bracket Installation

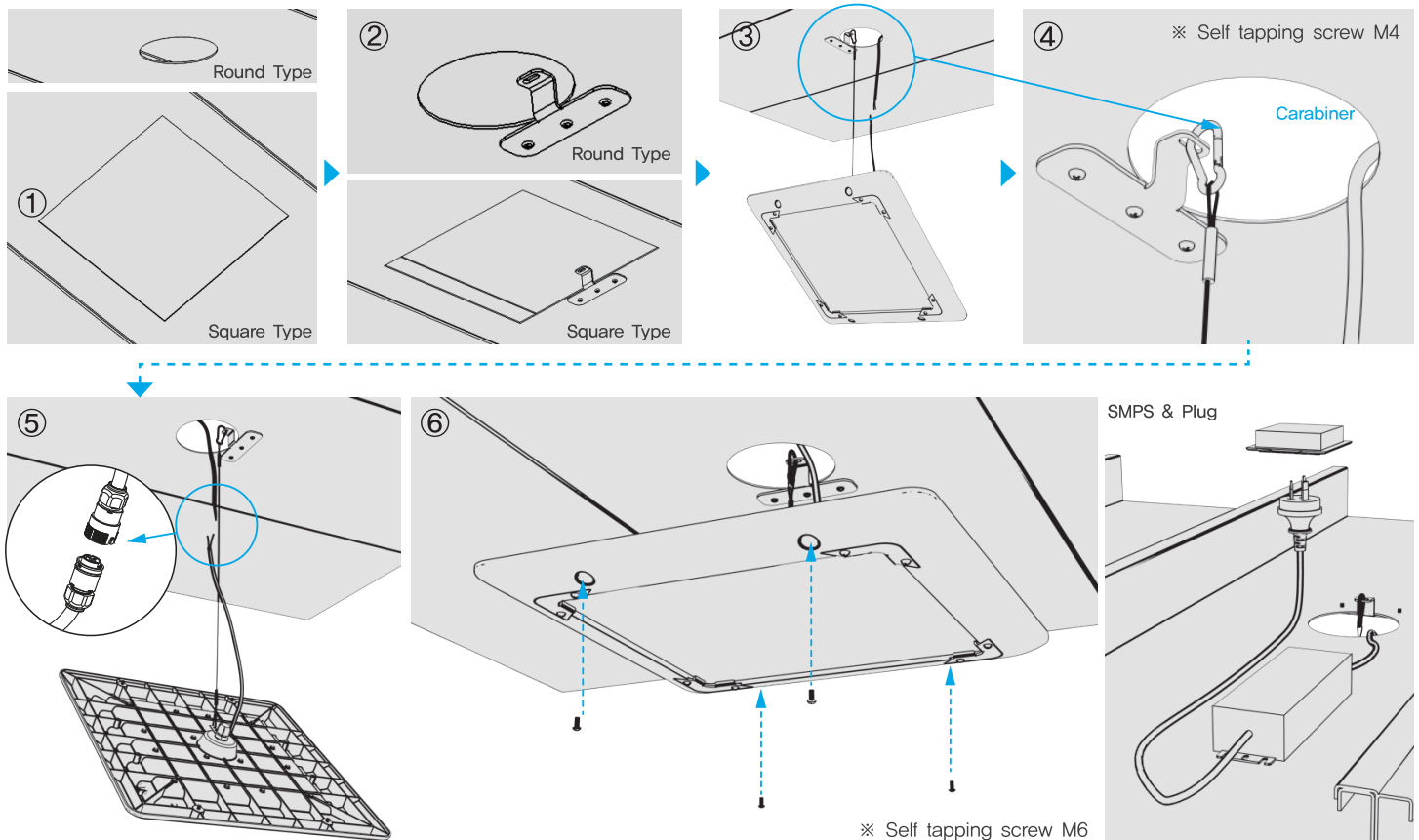


Installation

1. Secure the mounting bracket to fit the hole.
2. Put the hook to the mounting bracket.
3. Connect the DC wire between the product and power supply
4. Close the product to the deck and secure the product with screws.

0-10 Dim

Dim +	Purple
Dim -	Gray
Vaux	Black / White



" This product(IP65 grade) is optimized for indoor places and gas stations" .

" High temperature may cause deformation to the cover part(PMMA) due to selected material nature when used under hot conditions for a long time" .

Notice before handling

- Do not arbitrarily assemble or disassemble.
- Installation and repairs must only be carried out by a licensed electricians due to safety risks.
- During installation, follow the instructions as below.

Installation Warnings

- To avoid the risk of fire, explosion, or electric shock, this product should be installed, inspected and maintained by licensed electricians only, in accordance with the National Electrical Rules and local regulations.
- Ensure the supply voltage is the same as the rated voltage of the light fitting.
- Be certain electrical power is OFF before and during installation and maintenance.
- Proper grounding is required.
- Take proper care while handling the unit to avoid impact and scratching of the lens surface.
- Do not allow foreign substances to accumulate on the lens
- Do not handle the fitting by grasping any electrical cables, as this may cause damage to internal connections.
- The determination as to suitability of this product is the responsibility of the end user.
- Using the product in a manner not recommended will void the warranty and may result in a dangerous condition, a degradation of performance, or a shortened lifespan.
- The product is not designed for use as an up-light. Usage in this manner may result in a higher operating temperature and a shortened lifespan.
- Use only in conditions where the electrical supply is stable.
- Do not disassemble or make any modifications to the unit unnecessarily.
- Always install using safety wire.
- The unit may produce enough heat to support combustion if flammable objects are allowed to come into contact. Do not cover the light or deflect the beam with paper cloth or any other flammable material.
- During installation, care should be taken to reassemble the conduit cover correctly in order to maintain the IP rating. Any water damage caused by incorrect installation is not covered by the product warranty.
- Avoid looking directly at the light.
- The external flexible cable or cord of this LED Canopy light cannot be replaced. If the cord is damaged, the fitting may malfunction or present a safety hazard, and should not be used.
- In places where oil can accumulate, the glass cover option is mandatory.
- For non-user replaceable light sources:
 “The light source contained in this luminaire shall only be replaced by the manufacturer or his service agent or a similar qualified person”

Factory Information

1. GlowOne Co.,Ltd
 Address : 19, Samsung 1-ro 3-gil, Hwaseong-si,
 Gyeonggi-do, Republic of Korea
 Tel +82-70-080-1472, Fax : +82-31-8064-3899

Contact

Proudly distributed by

tigerlight®

1300 184 437

www.tigerlight.com.au

Designed and made in Korea

songhyun
GlowOne

Proudly distributed by

tigerlight[®]

1300 184 437

www.tigerlight.com.au