

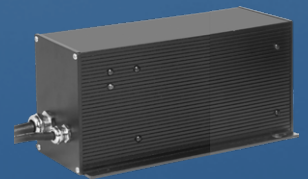
LED FLOOD / AREA LIGHT

# MEGA Flood

## 1200W with remote drivers

1200W

175,000 lm



High output luminaire - 175,000 lm @ 145 lm/W  
 Remote drivers facilitate future maintenance  
 Multiple optical lens, CCT and voltage options  
 Ideal for hard stand & ROM pad installations



-145 LUMENS PER WATT



REMOTE DRIVERS



IP67 RATING



MULTIPLE LENS OPTIONS



RA >70 CRI  
5000K



277 OR 415 VAC



5 YEAR WARRANTY

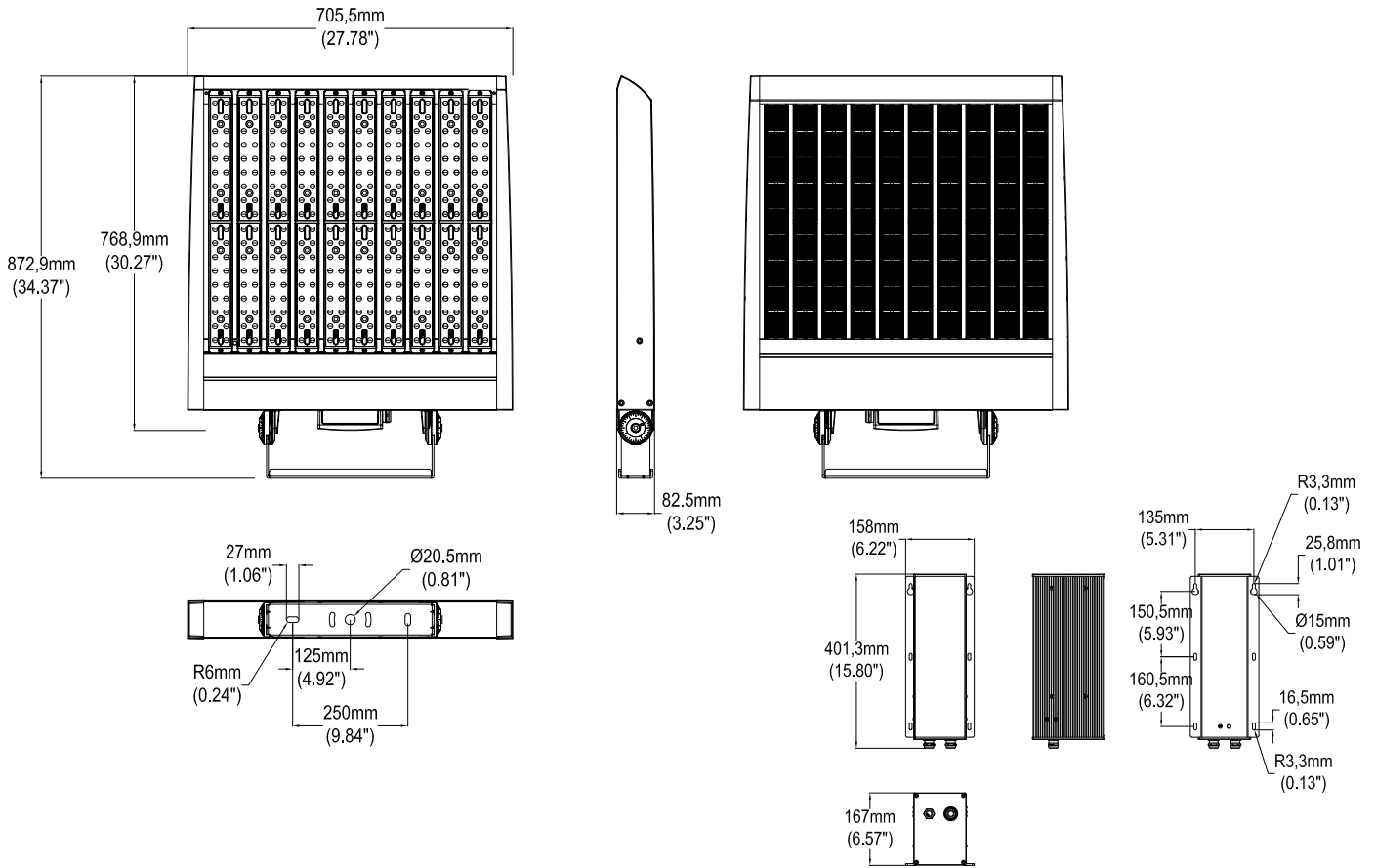
### HIGH-PERFORMANCE MODULAR FLOODLIGHT WITH REMOTE DRIVER

High output floods - 175,000 lm @ 145 lm/W  
 Open modular design for optimum heat management and lower wind resistance  
 Remote driver for ease of future maintenance  
 U-bracket for pole or wall-mount  
 Rated IP67 and IK10. Polycarbonate lenses.  
 14 optical lenses, including built-in back-spill control  
 4 CCT options  
 277 or 415VAC options

### APPLICATIONS

- High output flood designed for mounting on high poles or high building exteriors, where high lux levels are required
- Specifically designed for airports, ports, ROM pads and other hardstand areas in heavy industry and mining.

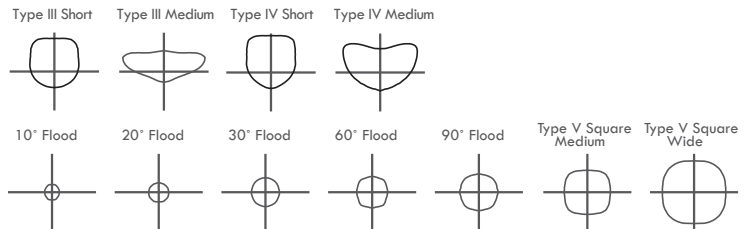




### OPTICAL LENS OPTIONS

Asymmetric:  
T3S, T3M, T4S, T4VS, T4M.

Symmetric:  
Square: T5M, T5W  
Round: T10D, T20D, T30D, T60D, T90D  
NB Standard lens is T5M square medium.



DELIVERY OF MADE-TO-ORDER ITEMS. Please allow up to 6-8 weeks for special order items if required product specification is not in stock.

### TECHNICAL PARAMETERS

Power consumption	1200W	IP Rating / IK Rating	IP67 / IK10
Input voltage options	100-277VAC or 415VAC	Composition - lenses	Polycarbonate - no glass
LED chip drive current	1050mA	Composition - housing	Aluminium with polyester coating (>100 microns)
Power factor	≥0.9 at full load	Working temperature	-40 to 50 °C
Surge protection	I <sub>max</sub> 20kA	Service life	>50,000 hours
LED chips	High performance Nichia, -145+ lm/W	Warranty	5 years
Driver / Dimming	Inventronics 2 x 680W / Dimmable 1-10VDC; DALI	Weight / Dimensions	Light head 20.5kg / 769mmL x 706W x 83mmD
Efficacy	-145 lm/W	Cabling	5 core - available separately
Colour temperature	5000°K (plus options for Amber, 3000°K, 4000°K)	Product codes	
CRI	RA >70	277VAC	FLD1200L-XXX-REM
Light distribution	IESNA Types III, IV, V options	415VAC	FLD1200H-XXX-REM
Light spill control	Built-in optical spill control	5 core cable	FL5SCC (ordered by the metre)