



tigerlight®

HIGH-PERFORMANCE
INDUSTRIAL LIGHTING

SILVERBACK IK10 IP66 BATTEN & INTEGRATED EMERGENCY





SUPER-STRONG IK10 BATTEN FOR DEMANDING CONDITIONS

Sleek in design and super-strong in construction

IK10 and IP66 for extra heavy duty applications

600mm 20W 3000 lm - 1200mm 40W 6400 lm, ~160 lm/W efficacy

Integrated Emergency - 1200mm 40W 6000 lm; 5W 637 lm in Emergency mode

Installer-friendly, rapid connect design. Linkable.

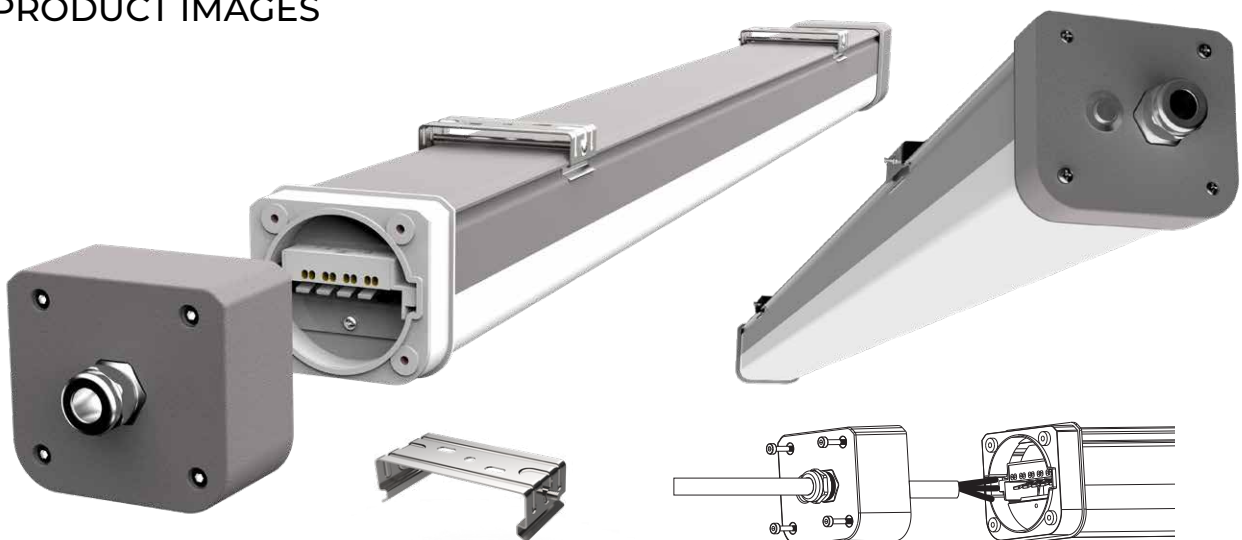
APPLICATIONS

For use in internal or external applications, where high a higher level of protection against water, particles, pressure and impact is required.

Modern hi-tech design makes it suitable to be installed in public and private spaces.

Manufacturing, warehouses & logistics, offices, car parks, service areas, tunnels, transport and security.

PRODUCT IMAGES



PRODUCT INTRODUCTION VIDEO



◀ Scan the QR code to view a brief introductory video on the SilverBack batten.


QUICK-CONNECT SYSTEM

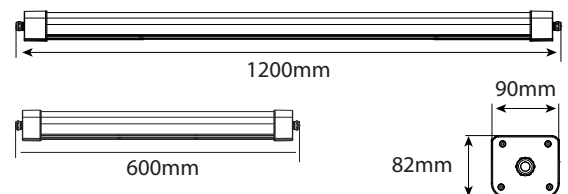
Quick-connect terminal block is situated at the end of the batten for easy access and fast trouble-free installation.

Linkable - Comes with M20 cable glands at both ends for simple linkage.


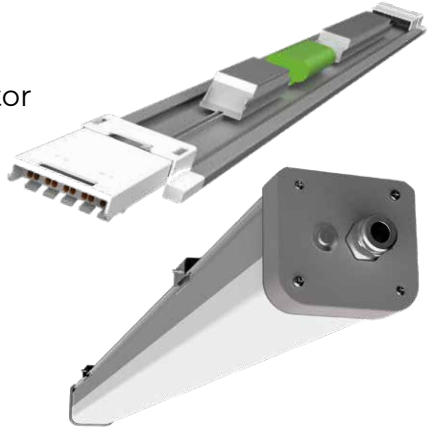


PERFORMANCE OVERVIEW

BATTEN SIZE	600mm	1200mm
Wattage	20W	40W
Lumen output	3000lm	6400 lm
Product code (Std)	PESB060040K	PESB120040K
(Emergency)	n/a	PESB120040K-EM
Voltage / PF / THD	220-240VA, 50/60Hz / >0.9 / <20%	
Efficacy	Standard ~160 lm/W, Emergency ~150 lm/W	
CCT / CRI	4000K / RA>80	
SCDM	<3	
Light distribution	120 degrees	
IK / IP Rating	IK10 / IP66	
Operating Temp	-20 to +40°C (0 to +40°C Emergency)	
Service life	>50,000hrs	
Diffuser	Polycarbonate	
Housing	Cast aluminium, RAL7035 grey	
Fixings	Nickel-plated brass M20 cable glands.	
Dimensions	82Wx90Hx600/1200mmL	
Weight	1.25kg (600mm) 2.1kg (1200mm)	
Mounting	Stainless ceiling-mount brackets supplied	
Cable Entry	Suits 2.5mm ² cable	
Linkability	Via cable entry both ends	
Certification	SAA, RCM 	
Warranty	3 years.	



INTEGRATED MAINTAINED EMERGENCY SPECIFICATIONS

Emergency Type	Maintained	
Emergency Wattage	5W	
Emergency Lumen	637lm	
Testing System	Self test via button with LED indicator	
Operating Temp	0-40deg C	
Weight	2.4kg	
Battery	LiFePO4	
Battery Voltage	6.4V	
Battery Capacity	3000ma (19.2wh)	
Classification	C0: D100 C90: D50	
Certification	AS2293.3 & IEC60598-2-22	



tigerlight®

T 1300 184 437
F 02 9913 8876
E info@tigerlight.com.au

**National Support &
Distribution Centre**
Unit 8, 1 Vuko Place,
Warriewood, NSW 2102

**Western Australia
Office & Warehouse**
Unit 3, 1 Distinction Road,
Wangara, WA 6065

tigerlight.com.au

LinkedIn Tigerlight Pty Ltd

 **TigerlightLED**

All documentation is subject to change without notice. © 20240430

