

LED BATTEN LIGHTS

SilverBack IK10 IP66 Batten 40W With Integrated Emergency Option

40W 6400 lm



Sleek, super-strong design & build
IK10 rated for impact resistance
IP66 protection against ingress
Integrated emergency option



-160 LUMENS
PER WATT



IK10
RATING



IP66
RATING



EMERGENCY
OPTION



RA >80 CRI
4000K



50,000+
HOURS



3 YEAR
WARRANTY

HEAVY DUTY INDUSTRIAL DESIGN

Super-strong construction for demanding applications
Maximum efficiency @ 160 lm/W for higher output
4000K cool white light with minimum glare
Installer friendly
Rapid connect system, easily accessible at end of fitting
Linkable - cable glands at both ends
Rated IP66 and IK10. Pressure resistant
50,000+ hour service life. 3 year warranty
Integrated emergency option.

APPLICATIONS

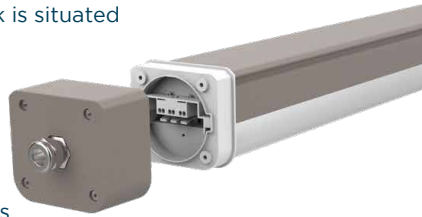
For use in internal or external applications, where high level of protection against water, particles, pressure and impact is required

- Modern hi-tech design makes it suitable to be installed in public and private spaces
- Manufacturing, warehouses & logistics, offices, car parks, service areas, tunnels, transport and security.



QUICK-CONNECT SYSTEM

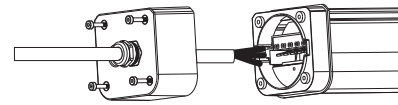
Quick-connect terminal block is situated at the end of the batten for easy access and fast trouble-free installation. Suits 2.5mm² cable.



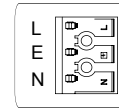
LINKABLE

Comes with M20 cable glands at both ends for simple linkage..

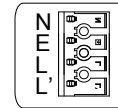
WIRING



Standard



Emergency

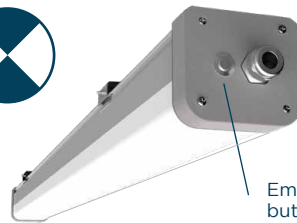


L for emergency live wire
L' for LED driver

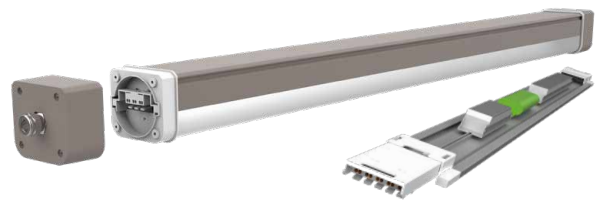
INTEGRATED MAINTAINED EMERGENCY OPTION

Built-in battery module provides valuable emergency capability.

4W emergency output
3 hour emergency run-time.

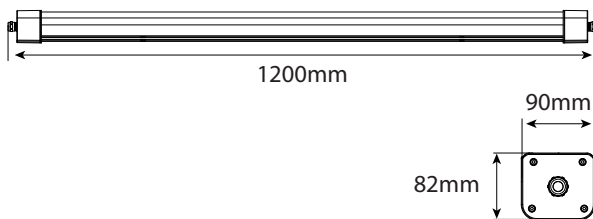


Emergency battery test button on end of fitting



Emergency gear tray, integrated into fitting.

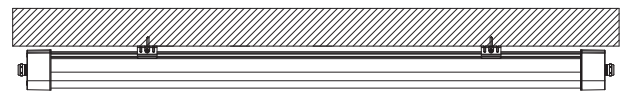
PHYSICAL DIMENSIONS



Dimensions 1200mm L 90mm W 82mm H
Weight (std 1200mm batten) 2.1kg

INSTALLATION

- Ceiling mount (brackets supplied)



Stainless steel brackets with screw for tension

TECHNICAL PARAMETERS

	1200mm Batten
Power consumption	40W
Input voltage & frequency	220-240VAC; 50/60Hz
Power factor	>0.9
THD	<20%
Efficacy	-160 lm/W (150 lm/W Emergency)
Luminous Flux	6400 lm
Colour temperature	4000°K Cool white
CRI	RA >80
Light distribution	120 degrees
Operating humidity	10-80%
IP Rating	IP66
IK Rating	IK10

Installation options	Ceiling mount standard
Composition - fixings	2 x nickel-plated brass M20 cable glands
Composition - diffuser	Polycarbonate
Composition - ends, housing	Cast aluminium, RAL7035 grey end caps
Working temperature	-20 to +40°C (0 to 30°C for Emergency)
Service life	>50,000 hours
Warranty	3 years
Weight	2.1kg
Dimensions LxWxHmm	1200x90x82mm
Product codes	
Standard 1200mm Batten	PESB120040K
Emergency option	PESB120040K-EM