



tigerlight®

HIGH-PERFORMANCE
INDUSTRIAL LIGHTING

SENTRY WALL PACK LIGHT

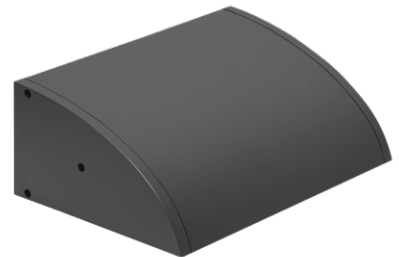



SENTRY



SENTRY WALL PACK LIGHT SENTRY EMERGENCY WALL PACK LIGHT

Industrial-quality high-performance wall-mounted luminaire
IP66 and IK10 rated for ultra-heavy duty
Efficacy 150+ lm/W
Range of optical lenses to suit wide or narrow areas
Range of lighting controls available to suit application
Emergency option for additional level of safety and security.

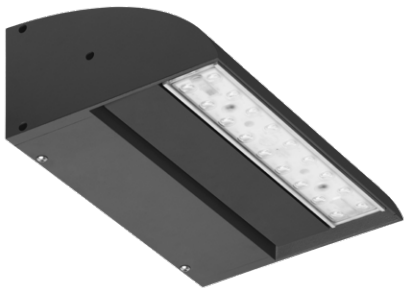


APPLICATIONS

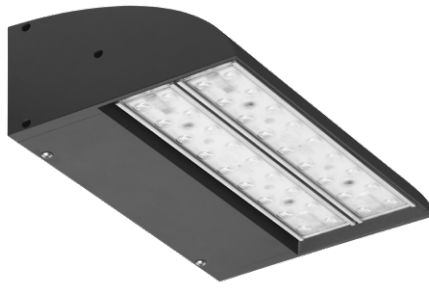
Security and safety lighting around building exteriors, illuminating private roadways, walkways, exits and entrances, stairways and landings.



SIZES & OPTIONS



SENTRY 40W
6000lm
Current draw 0.16A
One module. Weight 2.9kg
WLC040L



SENTRY 80W
12,160 lm
Current draw 0.32A
Two modules. Weight 3.1kg
WLC080L

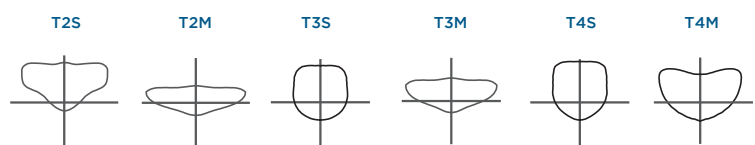


SENTRY EMERGENCY 40W
6000lm / 589 lm.
Maintained emergency
External self test button
Run-time 3hrs @ 5W
Weight 3.7kg.
WLC040L-EM

OPTICAL LENS OPTIONS

T3M lenses standard for optimum distribution at normal spacings and mounting heights.

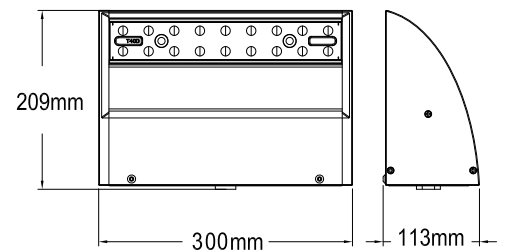
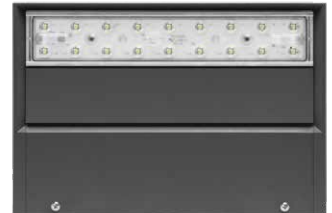
Other asymmetric lens options include T2S, T2M, T3S, T4S, T4M





SENTRY WALL PACK LIGHT

Voltages	100-277VAC, 50/60HZ
Power options	40W - 6000 lm / 80W - 12160 lm
Operating Temperatures	-40 to +50deg C
Efficacy	150+ lm/W
Initial Chromaticity	MacAdam 5
CCT	4000K std, 2200, 2700, 3000, 5000K
CRI options	Ra>70 std, >80 , >90
Optical lens options	T3M standard. Options Types 2, 3 & 4
IP / IK Rating	IP66 / IK10
Power factor	>0.95 at full load
Control Options	1-10V, DALI, Motion Sensor, Micro PE cell
Surge Protection	Imax 10KA
L70B10 / L90B10	>200,000hrs / >60,000hrs
Dimensions	300Lx209Wx113mmH
Weight	2.9kg 40W / 3.1kg 80W
Housing	Die Cast Aluminium
Colour	Black, grey, white
Surface Treatment	Polyester powdercoat, min 100µm
Certification	SAA, CE, CB
Warranty	5 years.



MODEL NUMBER SYSTEM

WL	C	040	L	T3M	7	40	BK	EM
DRIVE CURRENT	WATTAGE	VOLTAGE	OPTIC	CRI	CCT	HOUSING COLOUR	CONTROL	
A 350mA	020	L 100-277 VAC	T2S	7 >70	22 2200K	BK Black RAL 9011	00 No control	
B 530mA	030	D 8-32 VDC	T2M	8 >80	30 3000K	GY Grey RAL 7004	EM Emergency	
C 700mA	040		T3S	9 >90	40 4000K	WH White RAL 9010	DIM 1-10V	
	060		T3M		50 5000K		DOM 0-10V	
	080		T3L		AM Amber		DALI	
			T4M				MMS Microwave	
			T4S				PCM Micro PE	

Example above: WLC040L-T3M-740-BK-EM

Wall pack, 700mA drive current, 40W, 277VAC, T3M lenses, CRI>70, CCT 4000K, Black housing, Emergency option

SENTRY WALL PACK LIGHT - EMERGENCY



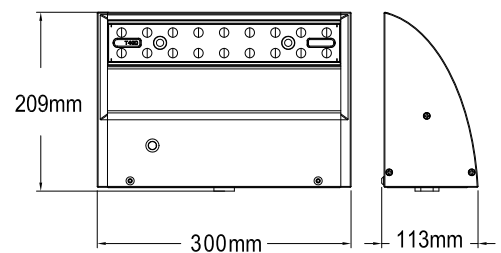
Emergency operation

Emergency Type	Maintained
Standard Output	40W 6,000lm
Emergency Wattage	5W
Emergency runtime	3hrs
Emergency output	589lm
Testing System	Self test via button with LED indicator
Operating Temp	0 to +40deg C
Battery	LiFePO4
Battery Voltage	6.4V
Battery Capacity	3200ma (20.48wh)
Classification	C0: D160 C90: D3.2.
Certification	AS2293.3 & IEC60598-2-22



Normal operation

Initial Chromaticity	MacAdam 5
CCT	4000K std, 2200, 2700, 3000, 5000K
CRI options	Ra>70 std, >80, >90
Optical lens options	T3M standard. Options Types 2, 3 & 4
IP / IK Rating	IP66 / IK10
Power factor	>0.95 at full load
Control Options	1-10V, DALI, Motion Sensor, Micro PE
Surge Protection	Imax 10KA
L70B10 / L90B10	>200,000hrs / >60,000hrs
Dimensions	300Lx209Wx113mmH
Weight	3.7kg
Housing	Die Cast Aluminium
Colour	Black, grey, white
Surface Treatment	Polyester powdercoat, min 100µm
Certification	SAA, CE, CB
Warranty	3 years.





tigerlight[®]

T 1300 184 437
F 02 9913 8876
E info@tigerlight.com.au

**National Support &
Distribution Centre**
Unit 8, 1 Vuko Place,
Warriewood, NSW 2102

**Western Australia
Office & Warehouse**
Unit 3, 1 Distinction Road,
Wangara, WA 6065

tigerlight.com.au

Linked  **Tigerlight Pty Ltd**

 **TigerlightLED**

All documentation is subject to change without notice. © 20240517

