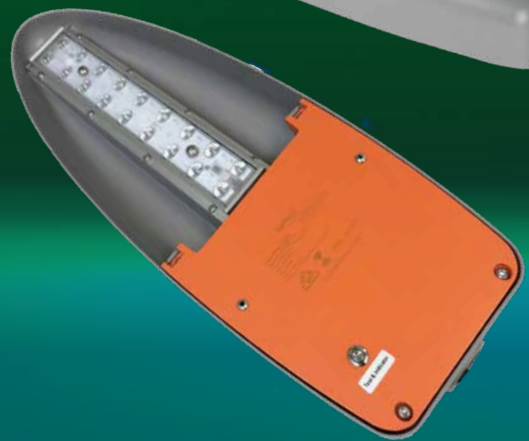


LED AREA LIGHT

MAKO Area Light - Green LEDs

Green LED Emergency Eyewash Station - 40W

40W 5,500 lm



High output Green LED light - 40W
T2M lenses for wide light spread
Maintained emergency module built-in



~140 LUMENS
PER WATT



T2M LENSES
& OPTIONS



IP66
RATING



IK10
RATING



MAINTAINED
EMERGENCY



GREEN LEDs
520nm



3 YEAR
WARRANTY

GREEN LEDs 520nm WITH BUILT-IN MAINTAINED EMERGENCY PACK

3 hour battery back-up @ 5W
Heavy duty industrial area light
Sleek design to prevent build up of dust and dirt
Wide light spread to suit shorter poles 2.4 to 6m
Output 140+ lm/W
Operating temperatures of 0 to +40°C
Rated IP67 and IK10. Polycarbonate lenses. No glass
34mm spigot entry
3 years warranty.

APPLICATIONS

- Emergency capability built into Mako fitting
- Task lighting over plant & equipment, conveyors & gantries, typically with 2.4-3m mounting height
- Low cost area lighting around industrial plants, mining camps, outbuildings, storage yards, muster points, access gates, roads & tracks.



EMERGENCY SHOWER EYEWASH STATION

Green LEDs - 520nm
Wide T2M light spread
Built-in maintained emergency light
3 hours runtime @ 5w output
IP66 & IK10 rated. 3 year warranty.



SPECIFICATIONS - MAINTAINED EMERGENCY OPTION

Battery located inside driver compartment	
5W emergency output - 3 hour runtime.	
Operating mode	Maintained
Charging method	Intelligent current limited constant voltage
Testing system	Status light & test switch under fitting
Cable connector	4 core cable with 4 position terminal block Constant active, switched active, neutral, earth
Operating temp	0-40°C
IP Rating	IP66

Orange coating on driver compartment lid for ease of identification

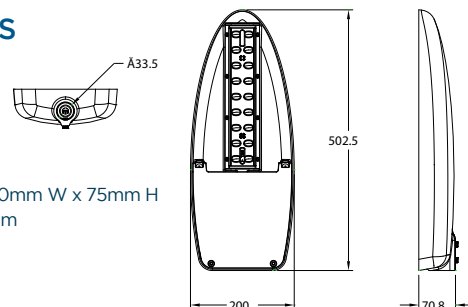


Status indicator & manual test button

Battery enclosed in driver compartment



DIMENSIONS



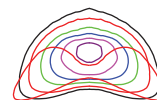
SIZE: 495mm L x 200mm W x 75mm H
SPIGOT ENTRY: 34mm
WEIGHT: 5.88kg
EPA: 0.076m2

OPTICAL LENS OPTIONS

Asymmetric lenses: T2M is the standard lens specification.
T4M lenses are also available.



T2M lenses standard



T4M lenses also available

DELIVERY OF MADE-TO-ORDER ITEMS

Please allow up to 6-8 weeks for special order items and where sufficient components may not be available locally.

TECHNICAL PARAMETERS

Power consumption	40W (5W during emergency operation)
Input voltage options	100-277VAC
LED chip drive current	700mA
Power factor	≥0.9 at full load
Surge protection	Imax 10kA
LED chips	High performance Nichia -140+ lm/W
Driver / Dimming	Philips Xitanium / Dimmable 1-10VDC
Luminous flux	5400 lm
Colour temperature	Green - 520nm
CRI	RA >70
Light distribution	IESNA T2M standard. T3M, T4S, T4M options
IP Rating / IK Rating	IP66 / IK10

Composition - lenses	Polycarbonate - no glass
Composition - housing	Aluminium with polyester coating (>100 microns)
Exterior colour	Grey-RAL7004 or black. Orange panel (Emergency)
Spigot entry/spigot OD	34mm spigot entry
Weight	5.88kg
Dimensions	495 L x 200 W x 75mm H
EPA	0.076m2
Working temperature	0 to 40 °C
Service life	>50,000 hours
Warranty	5 years. 3 years for emergency fittings
Product code	SL040MAKO-EMG