

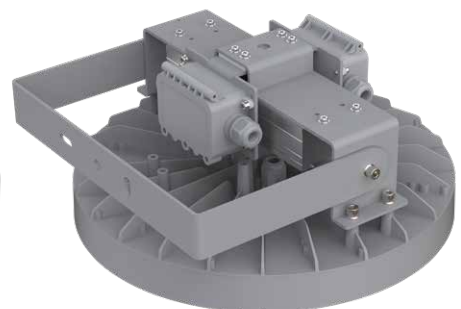
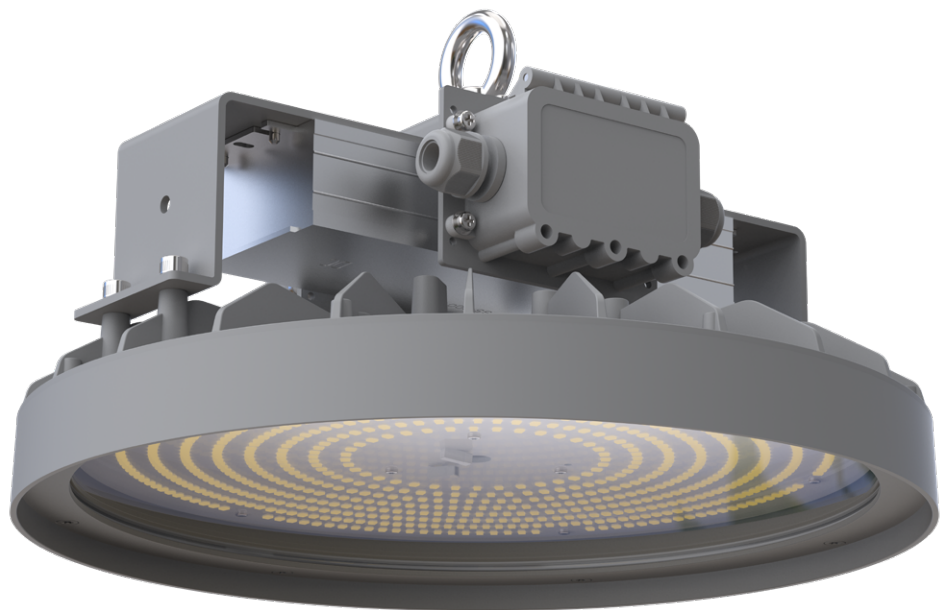


tigerlight®

HIGH-PERFORMANCE
INDUSTRIAL LIGHTING

PRIMO SERIES HIGHBAYS
100W 150W 200W

primo





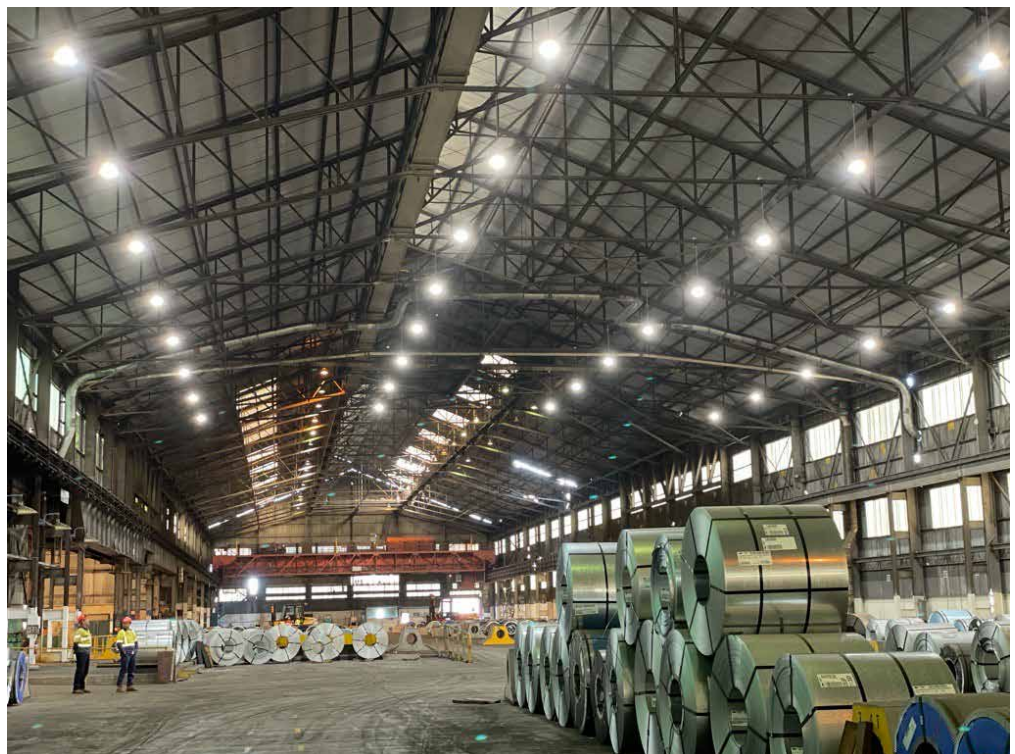
HIGH PERFORMANCE INDUSTRIAL HIGHBAYS

A range of 3 high performance highbays - 100W, 150W and 200W
Producing lumen outputs of 17,000, 25,500 and 34,000 lm respectively
Designed for heavy-duty use in industrial settings
High output LED chipset, producing 170 lm/W @ CRI80
Quality componentry for heavy-duty use, 24/7
6mm tempered glass lens
Rated IP66 and IK10.

OPTIONS

Lighting controls / Dimming
CCT and CRI options available
Mounting bracket for ceiling or wall.

primol



PERFORMANCE OVERVIEW

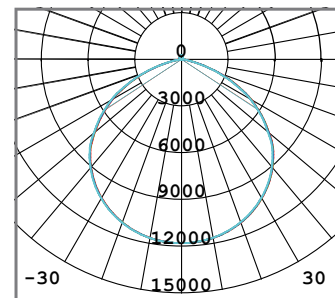


Electrical Characteristics

Voltage	100-277VAC		
Frequency	50/60Hz		
Wattage	100W	150W	200W
Part numbers	HE17K100-840	HE25K150-840	HE34K200-840
Dimming	0-10V		
Driver	Inventronics		
Driver model	EUM100S280LG	EUM150S420LG	EUM200S560LG

Photometrics

Lumen output	17,000 lm	25,500 lm	34,000 lm
L70 (200W model)	147,000hrs		
L90 (200W model)	45,000hrs		
Efficacy	170 lm/W		
CCT	4000K		
CRI	>80		
Beam angle	120 degrees		
SDCM	<3		



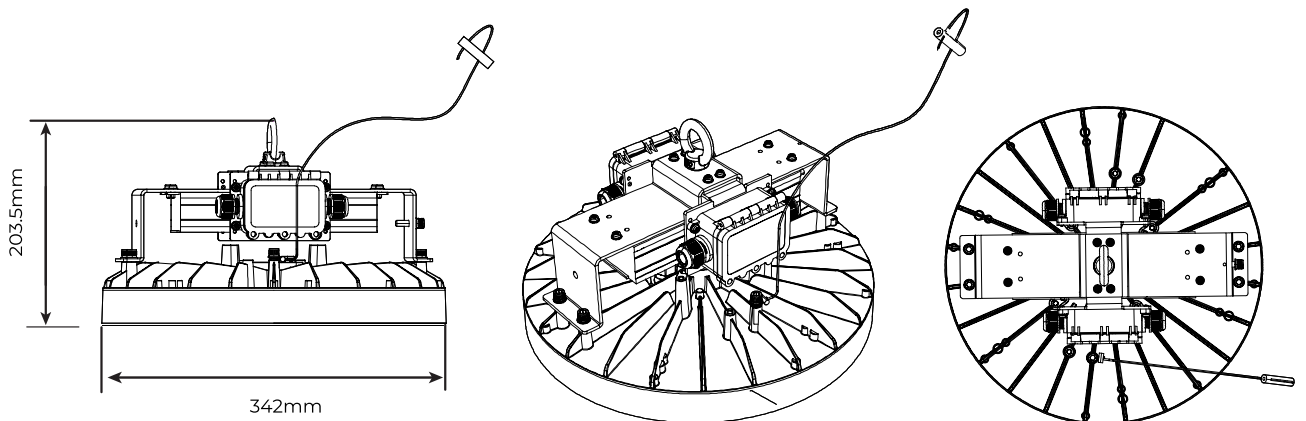
Physical Characteristics

IK Rating	IK10
IP Rating	IP66
Operating Temperatures	-30 to +50deg C
Housing	Die cast aluminium
Lens	6mm tempered glass
Housing colour	Grey RAL7004
Dimensions	342mm diameter x 204mm H
Weight	6.5kg
Mounting	Chain to eye bolt. Wall/ceiling bracket option
Flex	3m H07 rubber flex with AUS plug
Cable Entry	Suits 8.5-11.5mm cable

Certification SAA, RCM

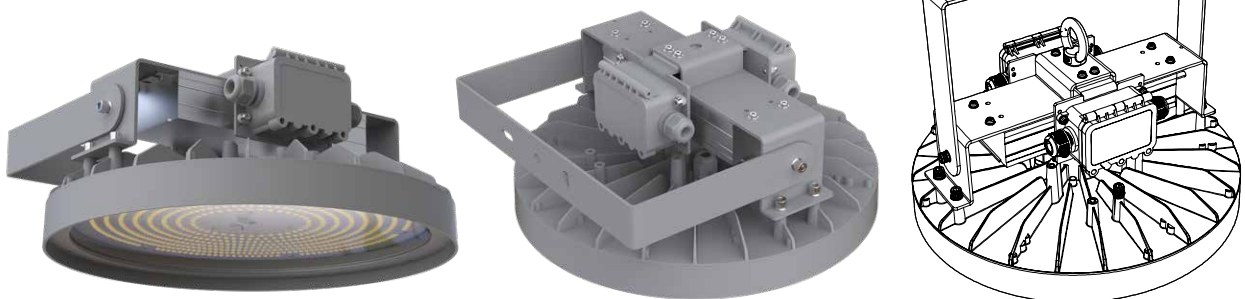
Warranty 5 years.

PRODUCT IMAGES



Mounting bracket option

Part number: HE-CMB



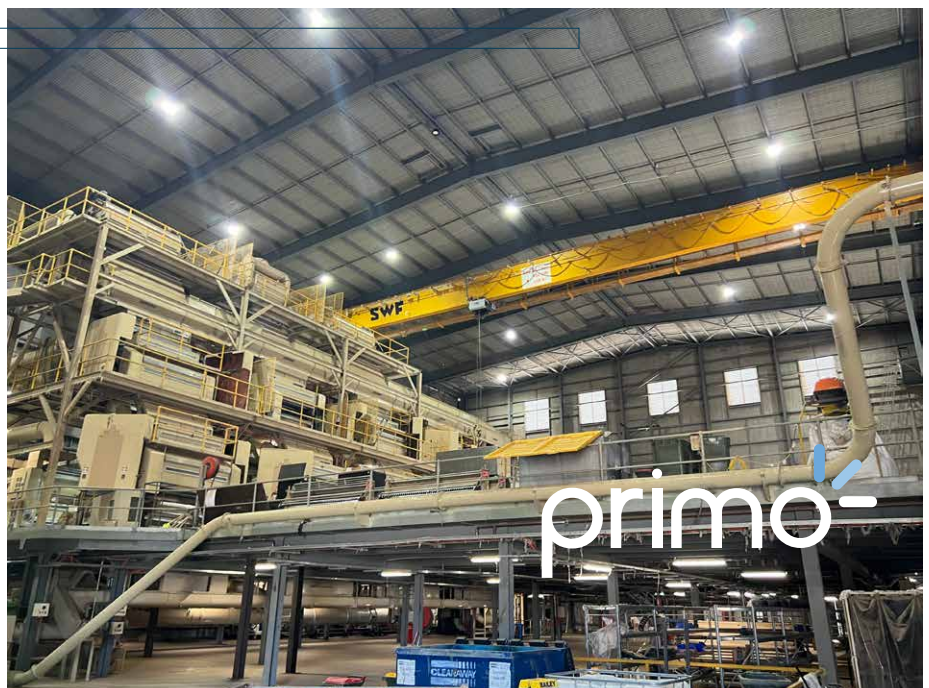
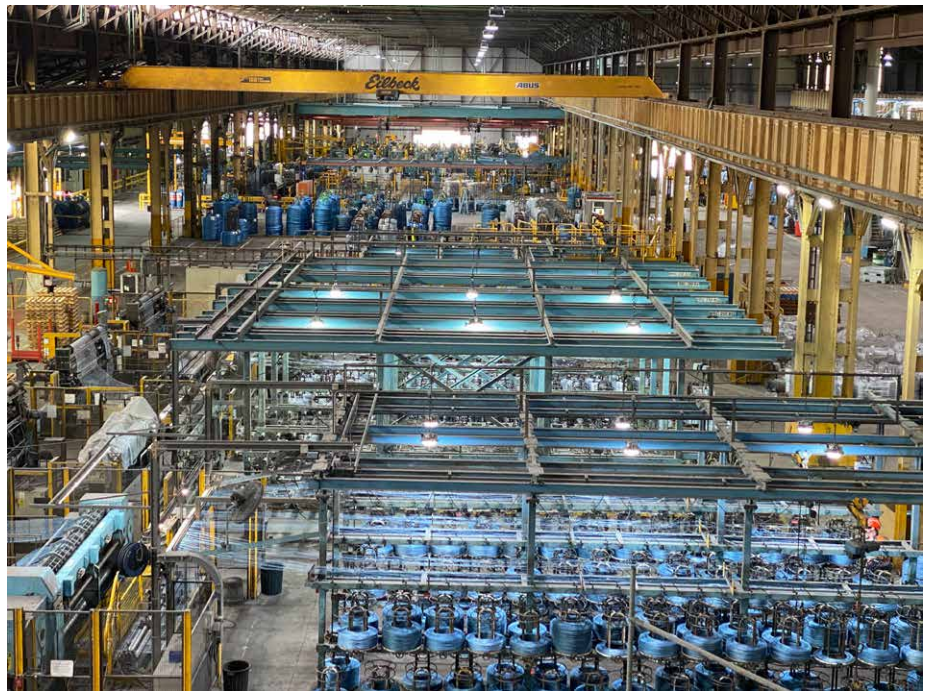


APPLICATIONS

Heavy industry
Retail

Warehousing and Logistics
Civic & sporting spaces

Aviation
Mining



primo-



tigerlight®

T 1300 184 437
F 02 9913 8876
E info@tigerlight.com.au

**National Support &
Distribution Centre**
Unit 8, 1 Vuko Place,
Warriewood, NSW 2102

**Western Australia
Office & Warehouse**
Unit 3, 1 Distinction Road,
Wangara, WA 6065

tigerlight.com.au

 Tigerlight Pty Ltd

 TigerlightLED

All documentation is subject to change without notice. © 20240517

