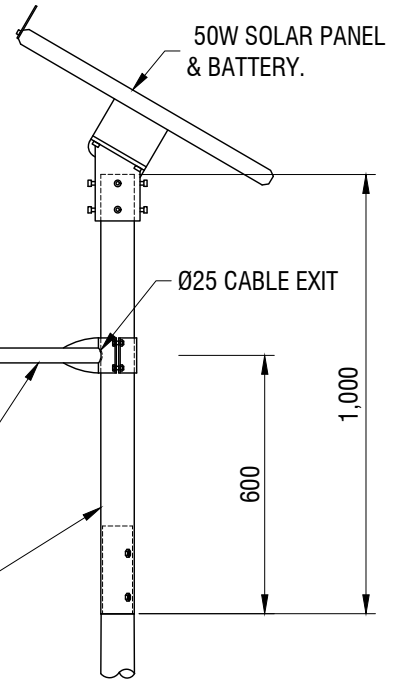


5.7m NOMINAL MOUNTING HEIGHT

5.3m NOMINAL MOUNTING HEIGHT

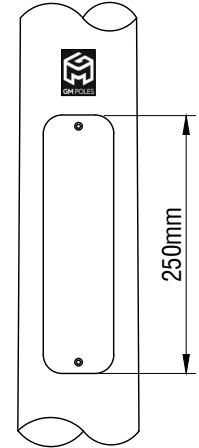
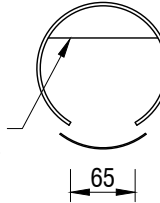
POLE SUITABLE FOR
LOCATIONS UP TO AND
INCLUDING:
WIND REGION A's
TERRAIN CATEGORY 1.0
TOPOGRAPHIC MULTIPLIER 1.1
IMPORTANCE LEVEL 1



POLE TOP RISER

GMP ID: TP-BR05-K.
GM POLES MANUFACTURED TAPERED
ROUND POLE HOT DIP GALVANISED
AFTER FABRICATION. (OPTIONAL
DUAL COAT POWDERCOAT FINISH)

POLE DOORS SUPPLIED WITH
300x90mm GEAR TRAY FOR
MOUNTING ELECTRICAL
EQUIPMENT

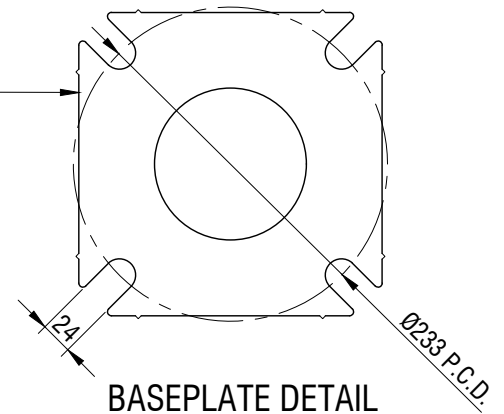


ACCESS DOOR

BASEPLATE TO SUIT GM POLES
4xM20 HIGH STRENGTH FOUNDATION
BOLTS ON A 233mm P.C.D. REFER TO
FOOTING GUIDE FOR RECOMMENDED
FOUNDATION DETAILS

ACCESS DOOR

BASEPLATE



BASEPLATE DETAIL

Rev	Date	Drm	Description	Chk
1	23/02/2023	B.D.	Ø114 PIPE POLE CHANGED TO TAPERED ROUND	B.D.
0	22/02/2023	B.D.	INITIAL ISSUE	B.D.



490 Freeman Rd.
RICHLANDS,
QLD 4077
Ph: (07) 3718 4900

TIGERLIGHT CORSO PRO
6m PIPE POLES

Drm	Date	Scale	Drawing No	Page
B.Donaldson	22/02/2023	N.T.S.	CD0010671A	1 of 1