

LED STREET LIGHTS

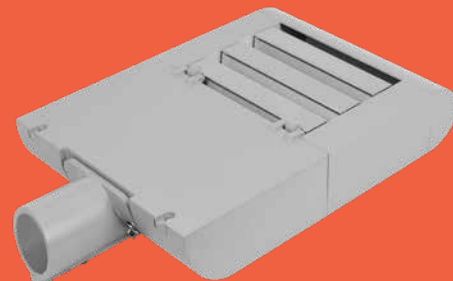
Tiger Street Lights

40W 80W 120W 160W 200W

40W	5,500 lm	80W	11,500 lm	120W	17,420 lm
-----	----------	-----	-----------	------	-----------

160W	22,750 lm	200W	29,105 lm
------	-----------	------	-----------

240-320W are available as a special order



Class-leading performance - 140 lm/W
 Highest quality components
 Built for ultra-dependable performance
 Rated IP67 and IK10 for exceptional durability.



-140 LUMENS PER WATT



50,000+ HOURS



IP67 & IK10 RATING



MULTIPLE LENS OPTIONS



RA >70 CRI
5000K



MOUNTING OPTIONS



5 YEAR WARRANTY

HIGH-PERFORMANCE COMPONENTS IN MODULAR DESIGN

High output street lights - 11,500 to 44,620 lm
 Open modular design for optimum heat management. Operating temps of -40 to +50°C
 Rated IP67 and IK10. Polycarbonate lenses.

BUILT TO YOUR SPECIFICATION

11 optical lenses, 4 CCT options, housing colours, 3 bracket options, dimmable 1-10VDC and DALI, and 3 voltages - 277V & 415V AC, and 12-24V DC.

APPLICATIONS

- Street lighting and area lighting
- Private roads, rail networks and industrial plants
- Carparks and roadways at hospitals, educational facilities and shopping centres
- Municipal carparks, forecourts & plaza areas.

TOP QUALITY COMPONENTS IN A MODULAR DESIGN

40W modules with multiple options including CCT (including Amber), housing colours, 7 optical lenses, voltages and lighting controls.



9.5kg
465x345x100mm

10.8kg
518x345x100mm

11.5kg
581x345x100mm

12.5kg
643x345x100mm

13.9kg
706x345x100mm

Available on special order only.

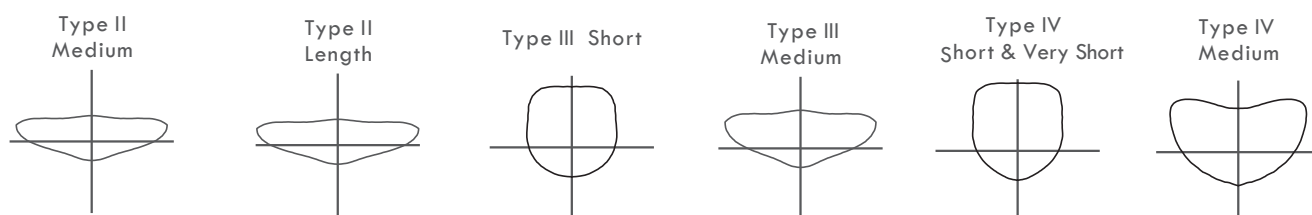
OPTIONS MENU

- Sizes: 40W to 200W standard. 240W to 320W on special order
- Lenses: 7 asymmetric lenses available. Plus 10-90° round lenses also available on special order
- PE cells
- Microwave motion sensor
- Housing colour - grey is standard. Black or other colours available
- Colour temps - 5000K standard. Amber, 3000, 4000, 6000K also available
- Dimming: DALI or 1-10VDC
- 277V or 415V AC or 12-24V DC.



PHOTOMETRICS - LENS OPTIONS

7 different asymmetric lens options are available. The standard configuration is T2M batwing. 10 - 90 degree round lenses are also available on special order.



APPLICATIONS

Private roads and pedestrian thoroughfares



Carparks



Dealerships and public areas



Billboards and signage



PRACTICAL, INSTALLER-FRIENDLY DESIGN

- Easy to open for quick installation
- Fittings contain built-in bubble spirit levels
- WAGO press-release terminal block present for quick and easy installation.

TENON-MOUNT

- Spigot 62mm int diam x 120mm L
- Tenon outer diam 42-60mm
- Spigot is assembled for a horizontal tenon mount
- Reverse the spigot assembly for vertical pole mount
- Spigot is adjustable -15° to +15° from the horizontal or vertical position to allow for tilting if required.



FULLY TESTED AND CERTIFIED

IES files & photometric profiles available. Certification available for following standards:

IEC /EN 60598-1: 2008
EN 62493:2010
IEC62471-2:2009
EN61547:2009
EN 61000-3-3:2013
(EC) 244/2009:2009-03-18
ENEC: No.: U6140888771007

IEC /EN 60598-2-3/A1: 2011
IEC62471: 2008
EN 55015: 2013
EN61000-3-2/A2:2009
(EU) 1194/2012:2012-12-12
CB: No.: SG-LE-0095

Ik10 rating, 3G vibration, 1000 hours salt mist test furnished upon request.



DELIVERY OF MADE-TO-ORDER ITEMS

Please allow up to 6-8 weeks for special order items and where sufficient components may not be available locally.

TECHNICAL PARAMETERS

Power consumption	40W 80W 120W 160W 200W
Input voltage options	100-277VAC or 415VAC
LED chip drive current	700mA
Power factor	≥0.9 at full load
Surge protection	I _{max} 20kA
LED chips	High performance -140+ lm/W
Driver / Dimming	Inventronics / Dimmable 1-10VDC; DALI
Efficacy	-140lm/W
Colour temperature	5000°K (options for Amber, 4000°K, 6000°K)
CRI	RA >70
Light distribution	IESNA Types II, III, IV, V options
Light spill control	Built-in optical spill control

IP Rating / IK Rating	IP67 / IK10
Composition - lenses	Polycarbonate - no glass
Composition - housing	Aluminium with polyester coating (>100 microns)
Working temperature	-40 to 50 °C
Service life	>50,000 hours
Warranty	5 years
Weight / Dimensions	See page 2 for dimensions of fittings & drivers
Product codes	40W SL040
	80W SL080
	120W SL120
	160W SL160
	200W SL200