

LED FLOOD / AREA LIGHT

MEGA Floods

80W 120W 200W 320W**80W****11,500 lm****120W****17,420 lm****200W****29,105 lm****320W****44,620 lm**

New generation modular design
Three bracket options for walls and poles
11 optical lens options to optimise light coverage
Rated IP67 and IK10 to go anywhere.

~140 LUMENS
PER WATT50,000+
HOURSIP67
RATINGMULTIPLE
LENS OPTIONSRA >70 CRI
5000KMOUNTING
OPTIONS5 YEAR
WARRANTY

HIGH-PERFORMANCE COMPONENTS IN MODULAR DESIGN

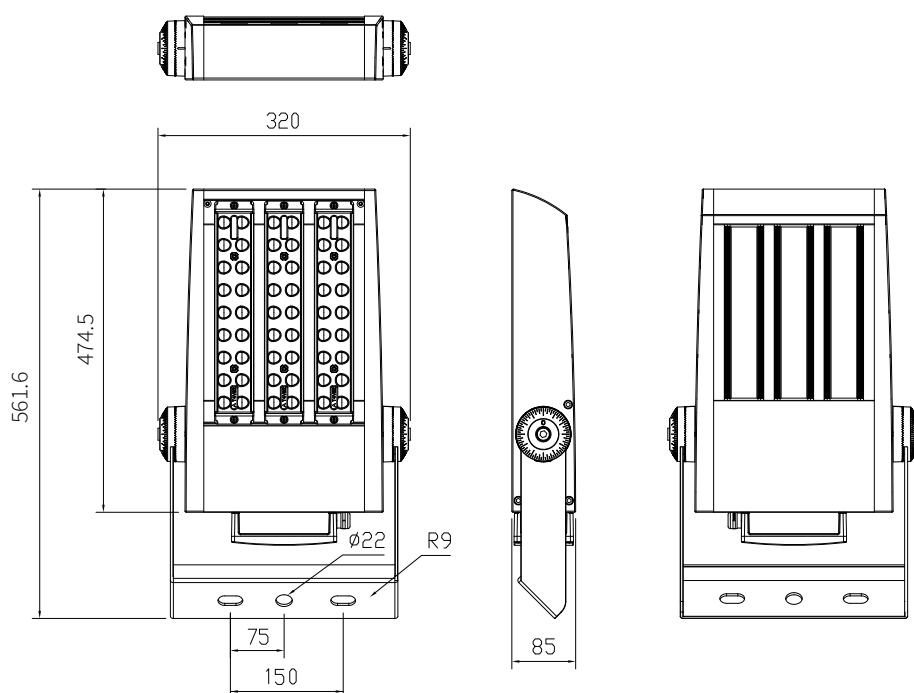
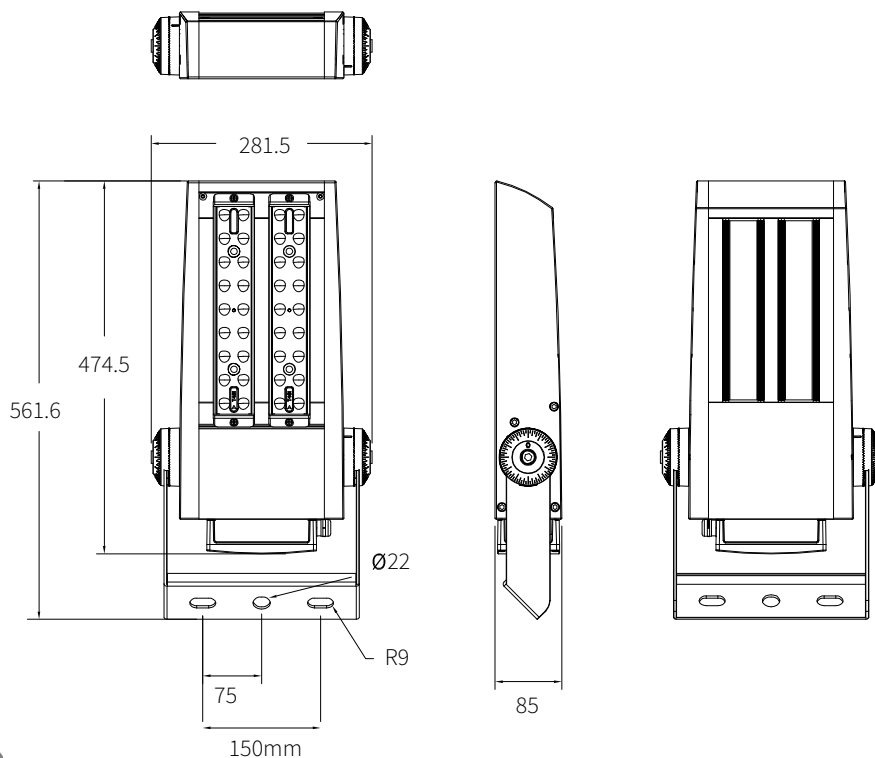
High output floods - 11,500 to 44,620 lm
Open modular design for optimum heat management. Operating temps of -40 to +50°C
Rated IP67 and IK10. Polycarbonate lenses.

BUILT TO YOUR SPECIFICATION

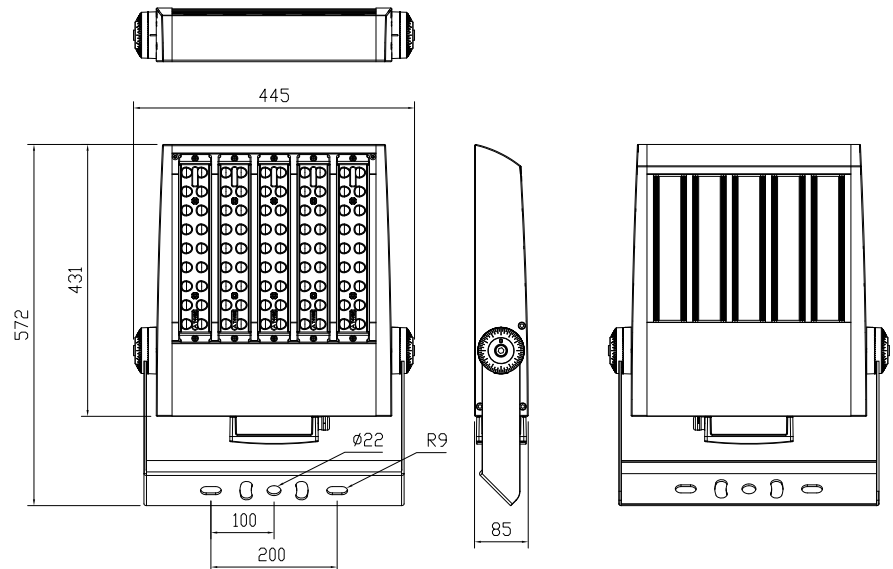
11 optical lenses, 4 CCT options, housing colours, 3 bracket options, 2 voltages 277VAC & 415VAC, dimmable 1-10VDC and DALI.

APPLICATIONS

- Indoor & outdoor flood, security and task lighting
- Heavy industry, mining, coolrooms, storage areas, loading bays, yards, perimeters and car parks
- Architectural illumination, museums
- Advertising billboards and signage on walls.



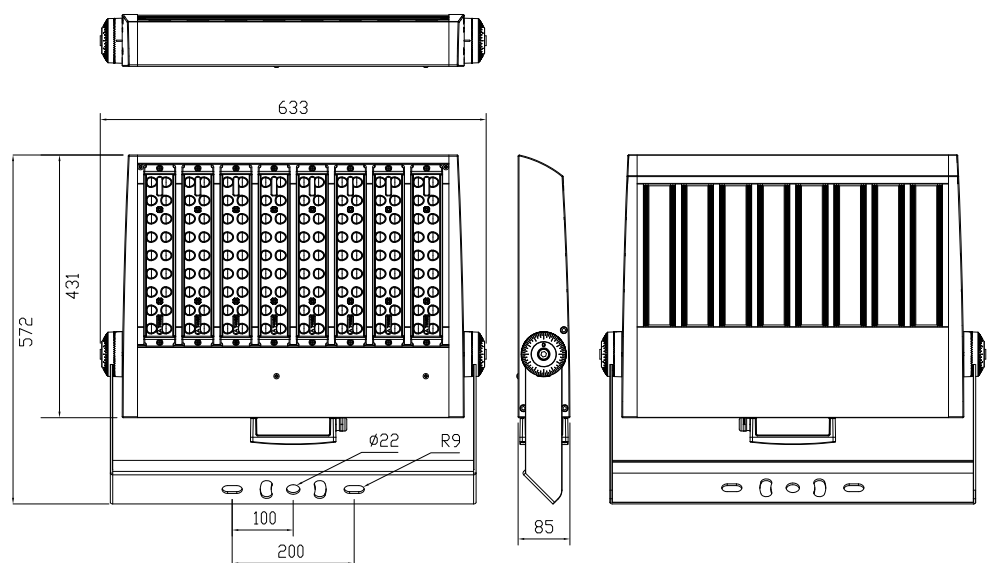
200W
29,105 lm
700+W HID equiv



5 x 40W modules
Current draw 0.88A
LED chip drive current 700mA
277 or 415VAC
Weight (U bracket) 10.0kg
Dimensions: 475x440x85mm



320 W
44,620 lm
1000W HID equiv



8 x 40W modules
Current draw 1.3A
LED chip drive current 700mA
277 or 415VAC
Weight (U bracket) 12.8kg
Dimensions: 475x628x85mm



80W 11,500 lm
250W HID equivalent

120W 17,420 lm
400W HID equivalent

200W 29,105 lm
700+W HID equivalent

320W 44,620 lm
To 1000W+ HID equivalent

TOP QUALITY COMPONENTS & MODULAR CONSTRUCTION

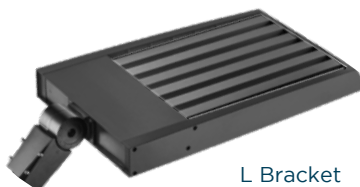
40W modules with choice of brackets, CCT, optical lenses, voltages and lighting controls.



BRACKET OPTIONS



U Bracket
walls and poles



L Bracket
adjustable pole mount

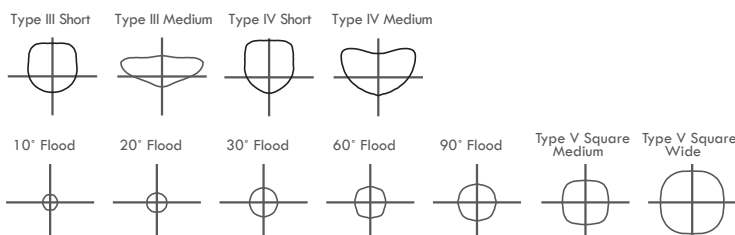


T Bracket
fixed pole mount

OPTICAL LENS OPTIONS

Asymmetric:
T3S, T3M, T4S, T4M.

Symmetric:
Square: T5M (standard), T5W
Round: T10D, T20D, T30D, T60D, T90D
NB Standard lens is T5M square medium.



DELIVERY OF MADE-TO-ORDER ITEMS

Please allow up to 6-8 weeks for special order items and where sufficient components may not be available locally.

TECHNICAL PARAMETERS

Power consumption	80W 120W 200W 320W
Input voltage options	100-277VAC or 415VAC
LED chip drive current	700mA
Power factor	≥0.9 at full load
Surge protection	Imax 20kA
LED chips	High performance -140+ lm/W
Driver / Dimming	Inventronics / Dimmable 1-10VDC; DALI
Efficacy	-140lm/W
Colour temperature	5000°K (options for Amber, 4000°K, 6000°K)
CRI	RA >70
Light distribution	IESNA Types III, IV, V options
Light spill control	Built-in optical spill control

IP Rating / IK Rating	IP67 / IK10	
Composition - lenses	Polycarbonate - no glass	
Composition - housing	Aluminium with polyester coating (>100 microns)	
Working temperature	-40 to 50 °C	
Service life	>50,000 hours	
Warranty	5 years	
Weight / Dimensions	See pages 2-3 for dimensions of fittings & drivers	
Product codes	277VAC	415VAC
80W	FLC080L-XXX	FLC080H-XXX
120W	FLC120L-XXX	FLC120H-XXX
200W	FLC200L-XXX	FLC200H-XXX
320W	FLC320L-XXX	FLC320H-XXX
Bracket type - add suffix:	U/standard. L/hinged pole mount. T/fixed pole mount	