

LED FLOOD / AREA LIGHT

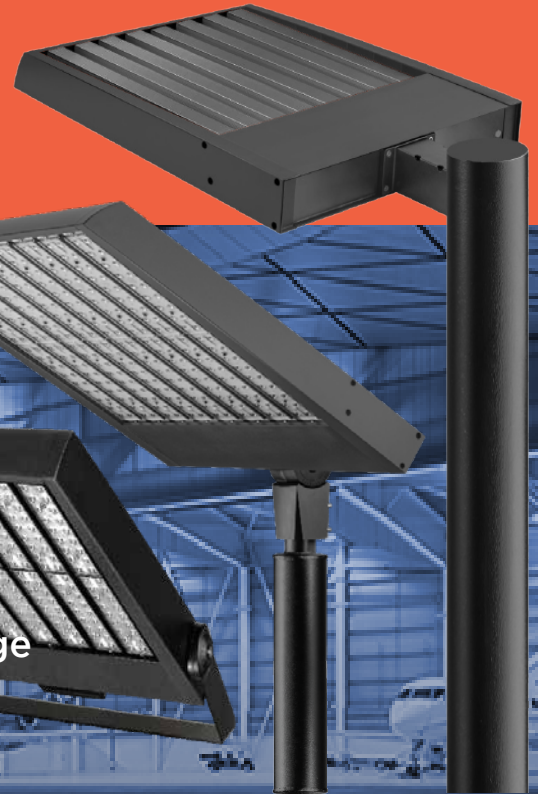
MEGA Floods

480W 720W 960W

480W 61,260 lm

720W 91,630 lm

960W 122,680 lm



New generation modular design
Three bracket options for walls and poles
11 optical lens options to optimise light coverage
Rated IP67 and IK10 to go anywhere.

~130 LUMENS
PER WATT50,000+
HOURSIP67
RATINGMULTIPLE
LENS OPTIONSRA >80 CRI
5000KMOUNTING
OPTIONS5 YEAR
WARRANTY

HIGH-PERFORMANCE COMPONENTS IN MODULAR DESIGN

High output floods - 61,000 to 122,000 lm
Open modular design for optimum heat management and lower wind resistance
Rated IP67 and IK10. Polycarbonate lenses.

BUILT TO YOUR SPECIFICATION

14 optical lenses, 4 CCT options, housing colours,
3 bracket options, 2 voltages 277VAC & 415VAC,
Dimmable 1-10VDC and DALI.

APPLICATIONS

- Indoor & outdoor flood and area lighting
- Heavy industry, mining, transport, railyards, perimeters, carparks, stadiums and other sporting venues.
- Mounted on walls, ceilings and poles
- Remote drivers for hard to access areas, or high heat or vibration areas
- 415VAC option for 3-phase installations.

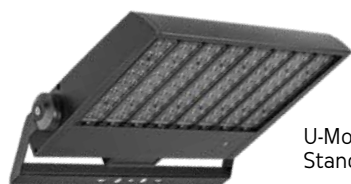
MEGA480

480W
61,260 lm
1000W+ HID equiv



8 x 60W modules
Current draw 2.05A
LED chip drive current 1050mA
277 or 415VAC
Weight (U bracket) 14.0kg
Dimensions: 475x628x85mm

MOUNTING BACKET OPTIONS



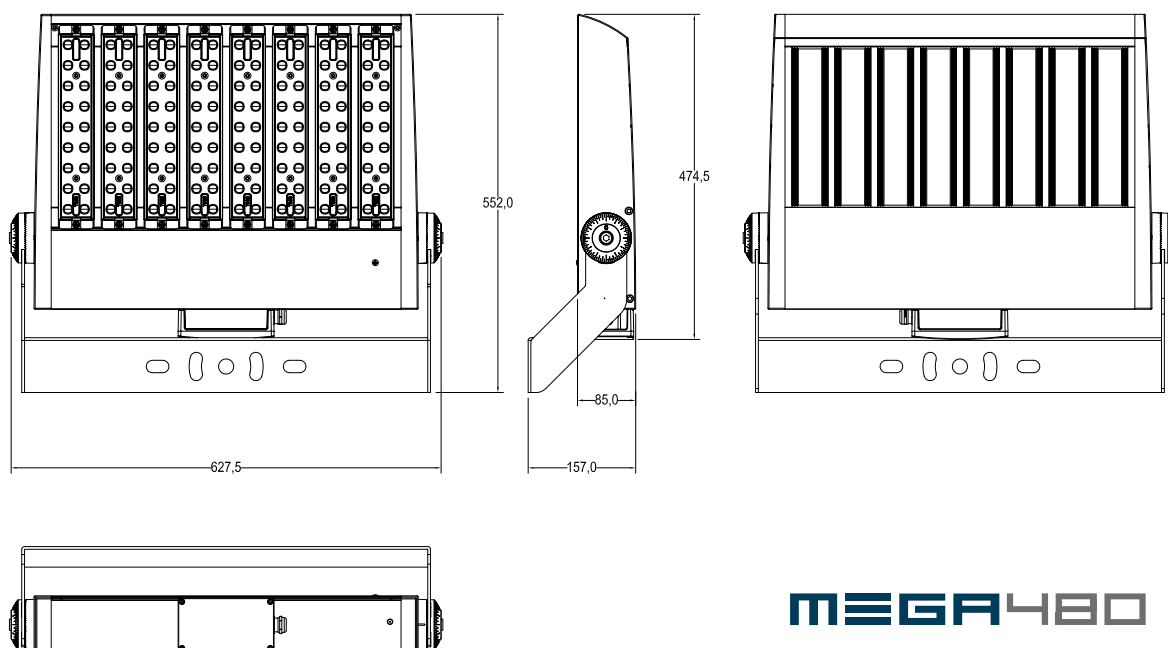
U-Mounting
Standard wall/pole



L-Mounting
Adjustable angle



T-Mounting
Fixed angle



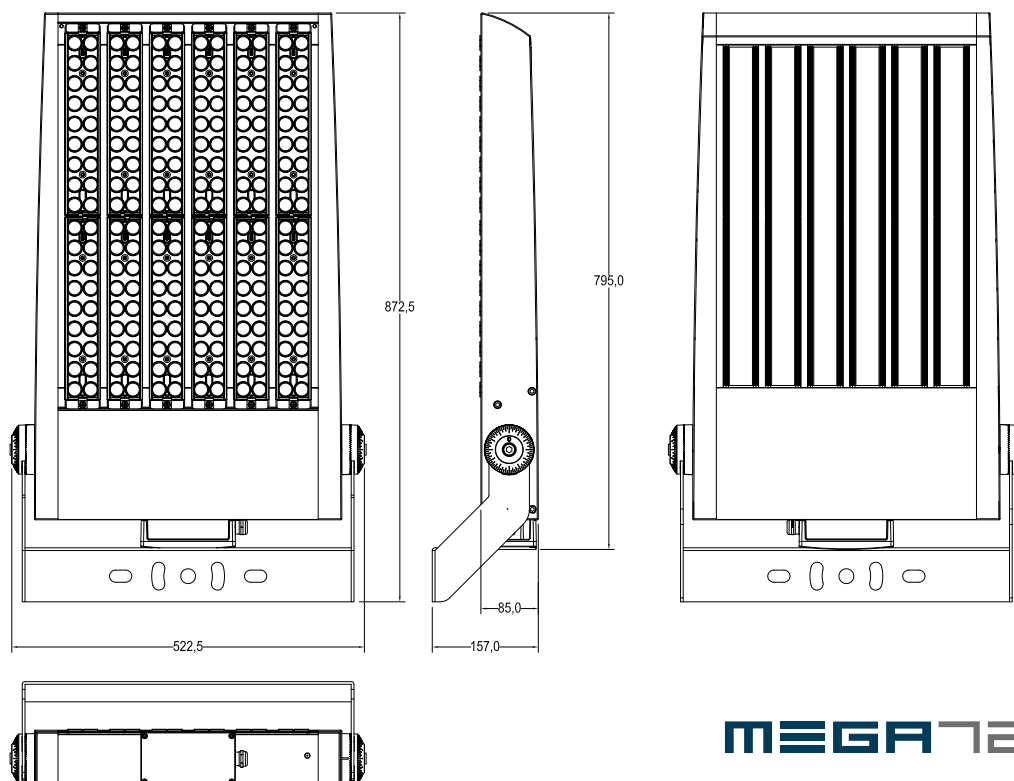
MEGA480

MEGA720

720W
91,630 lm
2000W HID equiv

6x2x60W modules
Current draw 3.05A
LED chip drive current 1050mA
277 or 415VAC
Weight (U bracket) 17.8kg
Dimensions: 795x523x85mm

MOUNTING BACKET OPTIONS



MEGA720

MEGA960

960W
122,680 lm
2000W+ HID equiv

8x2x60W modules
Current draw 4.02A
LED chip drive current 1050mA
277 or 415VAC
Weight (U bracket) 23.3kg
Dimensions: 795x648x85mm

MOUNTING BACKET OPTIONS



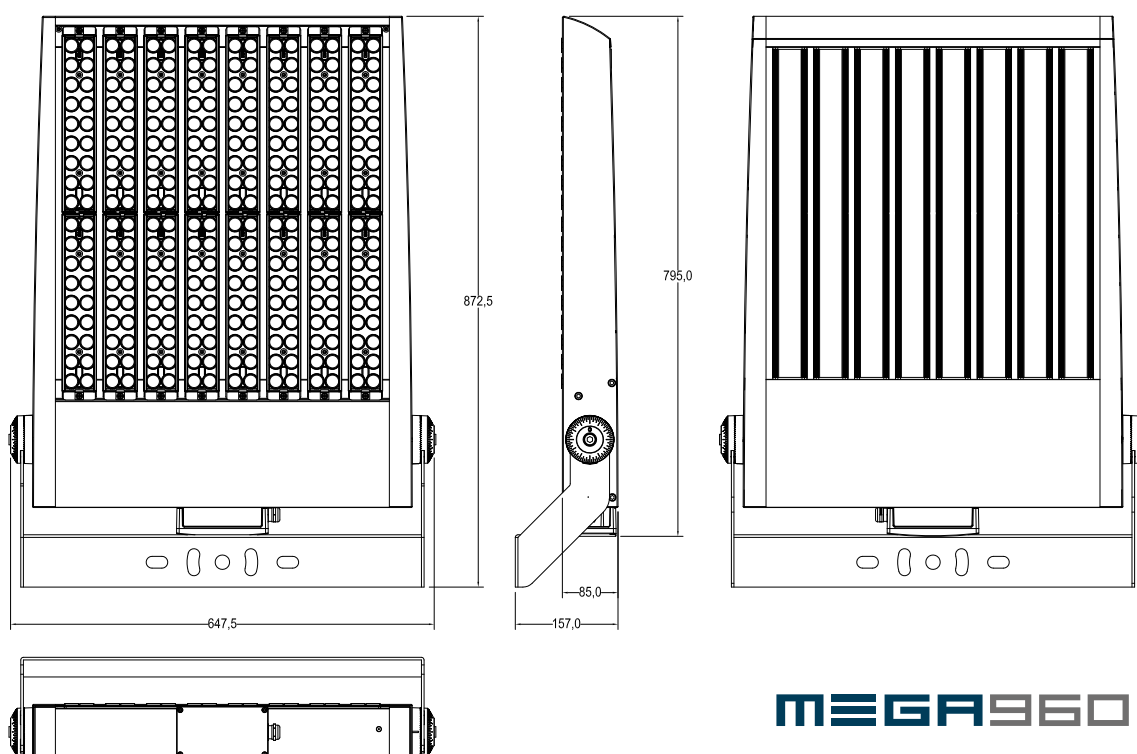
U-Mounting
Standard wall/pole



L-Mounting
Adjustable angle



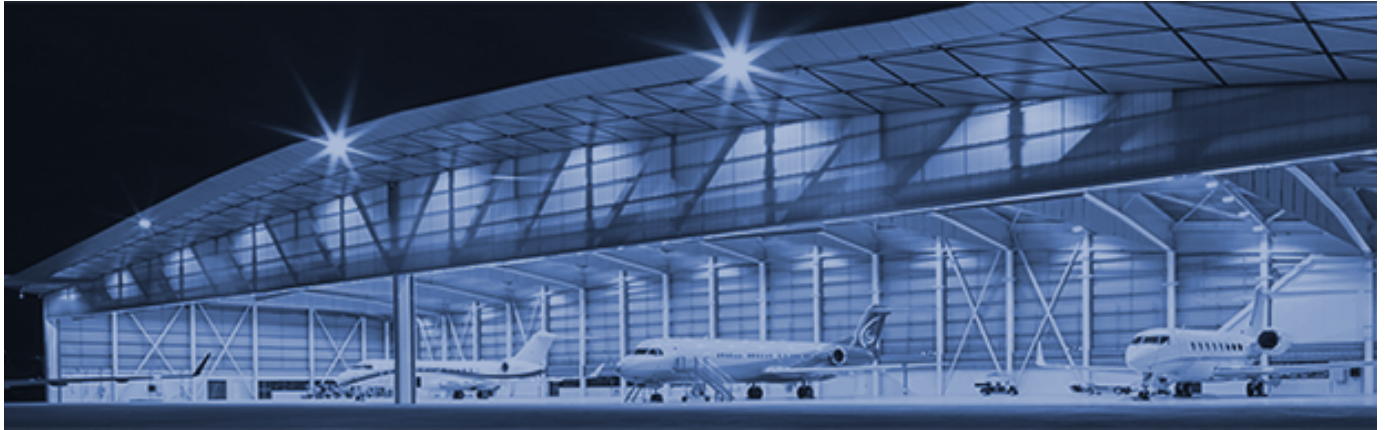
T-Mounting
Fixed angle



MEGA960

APPLICATIONS

Large area floodlighting - internal and external



Heavy industry & mining



Sporting venues and stadium lighting



DELIVERY OF MADE-TO-ORDER ITEMS

Please allow up to 6-8 weeks for special order items and where sufficient components may not be available locally.

480W 61,260 lm
1000W+ HID equivalent



720W 91,630 lm
2000W HID equivalent



960W 122,680 lm
2000W+ HID equivalent



MEGA 480

MEGA 720

MEGA 960

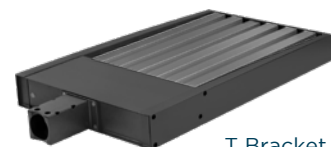
BRACKET OPTIONS



U Bracket
walls and poles



L Bracket
adjustable pole mount

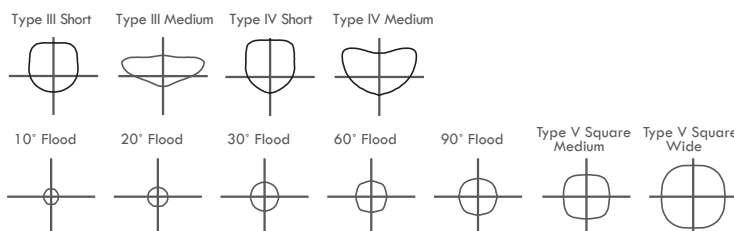


T Bracket
fixed pole mount

OPTICAL LENS OPTIONS

Asymmetric:
T3S, T3M, T4S, T4M.

Symmetric:
Square: T5M (standard), T5W
Round: T10D, T20D, T30D, T60D, T90D
NB Standard lens is T5M square medium.



EPA*

*Measured in
square feet -
with U bracket

| | 0°Tilt | 10°Tilt | 20°Tilt | 30°Tilt | 45°Tilt | 60°Tilt | 70°Tilt | 80°Tilt | 90°Tilt |
|------|--------|---------|---------|---------|---------|---------|---------|---------|---------|
| 480W | 0.72 | 0.99 | 1.26 | 1.52 | 1.79 | 2.06 | 2.33 | 2.59 | 2.86 |
| 720W | 0.90 | 1.28 | 1.65 | 2.03 | 2.40 | 2.78 | 3.15 | 3.53 | 3.90 |
| 960W | 0.96 | 1.46 | 1.96 | 2.46 | 2.97 | 3.47 | 3.97 | 4.47 | 4.97 |

TECHNICAL PARAMETERS

| | | | |
|------------------------|--|----------------------------|---|
| Power consumption | 480W 720W 960W | IP Rating / IK Rating | IP67 / IK10 |
| Input voltage options | 100-277VAC or 415VAC | Composition - lenses | Polycarbonate - no glass |
| LED chip drive current | 1050mA | Composition - housing | Aluminium with polyester coating (>100 microns) |
| Power factor | ≥0.9 at full load | Working temperature | -40 to 50 °C |
| Surge protection | Imax 20kA | Service life | >50,000 hours |
| LED chips | High performance -130+ lm/W | Warranty | 5 years |
| Driver / Dimming | Inventronics / Dimmable 1-10VDC; DALI | Weight / Dimensions | See pages 2-4 for dimensions of fittings & drivers |
| Efficacy | -130lm/W | Product codes | 277VAC 415VAC |
| Colour temperature | 5000°K (options for Amber, 4000°K, 6000°K) | 480W | FLD480L-XXX FLD480H-XXX |
| CRI | RA >70 | 720W | FLD720L-XXX FLD720H-XXX |
| Light distribution | IESNA Types III, IV, V options | 960W | FLD960L-XXX FLD960H-XXX |
| Light spill control | Built-in optical spill control | Bracket type - add suffix: | U/standard. L/hinged pole mount. T/fixed pole mount |