

## Case Study

New Primo 15K Canopy lights were selected for the new Metro Petroleum outlet in Blackwater, 200km west of Rockhampton. The clean lines of the flush-mounted luminaires and excellent lumen output resulted in a safe, attractive and eye-catchingly bright service environment.



primo<sup>®</sup>  
**MEGA  
FLOOD**

### Summary

Metro Petroleum opened its newest franchise outlet in Blackwater, west of Rockhampton, with Tigerlight's new Primo 15K 100W Canopy lights under the central awning, along with spigot mounted 120W MegaFloods on poles illuminating the entry, exit and customer parking areas.

Installation of both fittings was quick and easy. The MegaFloods' spigot bracket is adjustable, allowing flexibility in reach and spread, while the Primo Canopy lights sit flush to the underside of the awning and appear sleek and stylish.

The 15,000 lumen canopy lights and 17,420 lumen MegaFloods combined to provide superior light levels across the entire property.

While the property itself was lit to a very high level for maximum safety and to allow the security cameras to function well at night. Light spill into neighbouring properties was minimal.

### Solution

The site was illuminated by the following:

- **18 x Primo 15K Canopy lights - 100W - 15,000 lm**

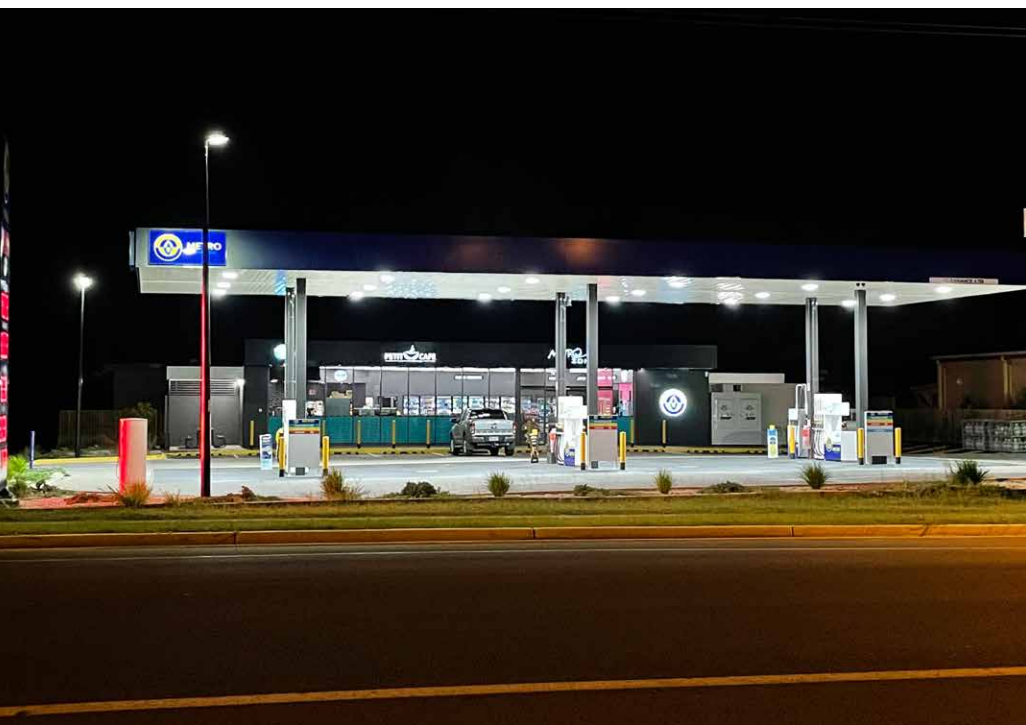
The canopy lights were arranged into 3 rows of 6 and were flush mounted on the underside of the awning, presenting customers with a sleek, clean and modern appearance.

The 5000K CCT and CRI of >80, the quality of light was ideal for the requirements.

- **3 x MegaFloods 120W - 17,420 lm.**

The MegaFloods were pole-mounted with adjustable spigot brackets.

In-house Tigerlight lighting engineers selected T4M optical lenses to provide the necessary spread and uniformity of light, while minimising light spill into adjoining properties.



Above: 6 rows of 3 Primo 15K Canopy lights produced very impressive lux levels, with 115 degree beam spread and a bright white CCT of 5000K. Similarly, the T4M optical lensing selected for the 120W MegaFloods provided good even coverage throughout the property. Metro Petroleum sought maximum lux levels, for higher degrees of customer safety and greater efficacy of security cameras at night.



## Primo 15K Canopy Light 100W - 15,000 lm

HIGH PERFORMANCE CANOPY LIGHT  
FOR 4-8M+ CEILINGS

Outstanding 15,000 lumens from 100W at 150 lm/W  
Outstanding efficiency - latest high performance LEDs  
Dimmable driver for use with optional lighting controls  
Wide 115 degree beam spread for even light distribution  
Bright white 5,000K light. CRI >80. Low glare design  
Rated IP65 and for operating temps from -30 to +50°C  
HACCP Certied Food-safe design  
Heavy duty PMMA acrylic lens  
50,000+ hour service life and 5 year warranty.

## MegaFlood with adjustable spigot-mount 120W - 17,420 lm

New generation, compact modular design  
Three bracket options for walls and poles  
11 optical lens options to optimise light coverage  
5000K CCT  
Sleek black appearance  
Rated IP67 and IK10 to go anywhere  
Unsurpassed reliability. 5 year warranty.

