

## Case Study

Albury City Council selected Mako LED area lights to upgrade the lighting all along the 10.4km cycle and pedestrian track to Thurgoona, citing reliability, IK10 rating, light sensors and lens options for great uniformity while minimising spill into adjacent properties.



**MAKO**  
by tigerlight

### Summary

40W Mako area lights were trialled in position for 12 months prior to proceeding with the upgrade.

A total of 393 fittings were installed along the 10.4km pathway. The majority had integrated motion sensors to automatically dim to 30% output when not required and brightening to 100% for 3 minutes when people were detected.

### Challenge Faced

The major challenge concerned the construction of a certified lighting plan to provide exceptionally uniform light over the track without encroaching on neighbouring properties.

Tigerlight's in-house design team produced a plan for the installation which met the AS1158 standard and the AS4282 obtrusive lighting standards.

### Solution

A total of 20 x 40W Mako fittings were installed in the first two stages, with 373 more to follow.

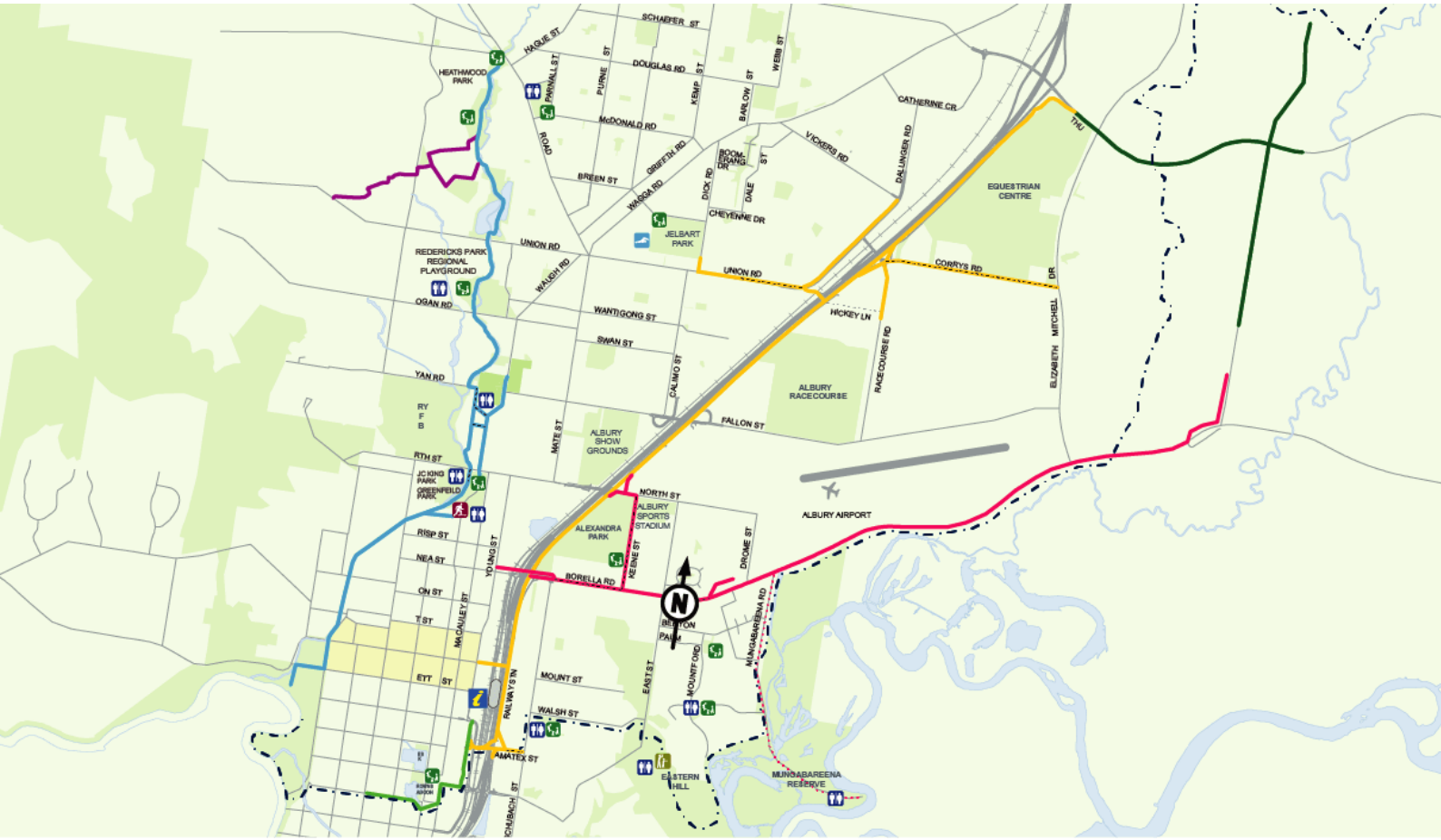
Mounting height was 6.2m, on existing poles with the same 30mm spigot-size. Spacings were 25m apart. The target lux level was 20 lux.

This 20 lux target was met as forecast in the preliminary lighting design produced by Tigerlight.

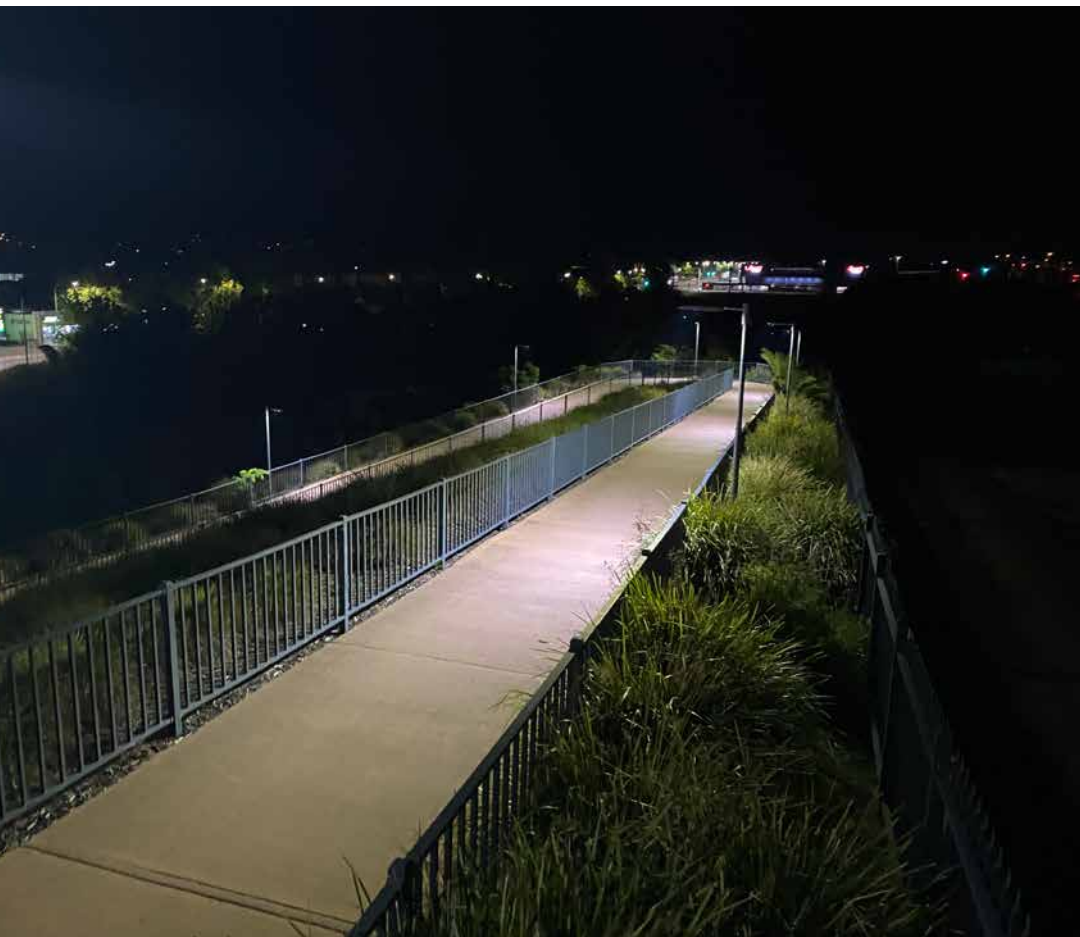
The build quality, light output and extra-wide side-to-side light distribution impressed the Albury Council management team.

Also important was the ease of mounting the Mako fittings onto the existing 30mm spigots.

To facilitate the installation further, Tigerlight worked with the contractor to deliver with the required length of cable already pre-installed.



The yellow line above shows extent of the 10.4km pedestrian and cycle path running from central Albury to Thurgoona, NSW.

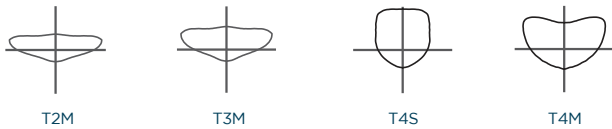




Excellent uniformity with minimal obtrusive light spill along the 10.4km track.

### Photometrics

The extra-wide light distribution stems from the IESNA Type T2M lenses which are standard on the Mako fitting. T3M, T4S and T4M lens options are also available to suit the lighting plan.



#### LIGHT SPREAD AT 4-6m.

Beam area >1 lux. LLF 0.8

Mounting height	Ave lux	Max lux	Beam area
4m	7	55	32m x 13m
5m	5	36	37m x 16m
6m	4	25	41m x 18m

### Versatile go-anywhere area light fitting

- Mako is proving to be useful as an all-purpose streetlight and area light
- Its sleek appearance and choice of grey or black polyester coating make it an ideal choice for streets and roadways, walkways, entrances, and carparks
- Suitable for commercial, government, industrial sites as well as residential developments, retirement villages and caravan parks.

### Mako 40W LED Area Light

- 5,400 lumens at over 140 lumens per watt
- Replaces up to 150W HID
- 40W LED module with high-performance chips
- Super-reliable Philips Xitanium driver
- Polycarbonate lenses
- Corrosion-resistant polyester coating
- Sleek, rounded shape reduces material build-up
- IP67 and IK10 rating.



Microwave motion sensor option

**MAKO**  
by tigerlight

